



PELAHATCHIE NEWS NETWORK



March 2024 ■ Volume 13, Issue 3 ■ Pelahatchie, MS

PHS Beta Club win 2nd Living Literature title at State Convention

Special to Pelahatchie News

Competing at the State Beta Convention this year, Pelahatchie High School Beta Club earned the Living Literature Championship title. The school is proud of each of these students, sponsors, and teachers for their commitment to this presentation. The Tribe outdid themselves on the PHS Living Literature set that earned them the championship title for the second year in a row. Their vision came to life as these students put on an amazing still shot performance. This year's scene was from *The Fellowship of the Ring* by JRR Tolkien.

The Living Lit competition is like a still shot from a novel, play, or poem - except students set the scene instead of wax figures. They took great care in building the set. They also took



Photos special to Pelahatchie News

pride in making much of the set and costumes themselves instead of buying them. So many Betas, teachers, students, and parents helped to cre-

ate this set and costumes: it truly took a tribe to bring home the Champion plaque. Beta member Melanie Ball also placed in the top five in Drawing,

Division II.

PHS Beta needs your help to raise funds to attend the National Beta Convention held in Savannah, GA.

Continued on Page 2

PRSR STD
U.S. POSTAGE
PAID
PELAHATCHIE, MS
PERMIT NO. 4

PELAHATCHIE NEWS
P. O. BOX 771
PELAHATCHIE, MS 39145

Subscribe Today!

Call 601-566-1932

ERA MAIS Girls Basketball 2023-24 Overall Champions



Special to Pelahatchie News

Congratulations to the Lady Patriots! East Rankin beats MRA with a final score of 41-39!



**MISSISSIPPI
DENTAL CENTER**

FAMILY • COSMETIC • IMPLANT

501 Second Street
Pelahatchie, MS 39145

Mon 8a-7p, Tues 8a-5p
Wed 8a-5p, Fri 8a-12p

601-854-7478
www.mississippidentalcenter.com

**TREATING CHILDREN,
ADULTS, AND SENIORS**

Cleanings • Fillings • Extractions
Whitening • Dentures • Crowns
Root Canals • Implants and More

*Accepting Insurance, Medicaid,
CHIPS, and CareCredit*



A CARING & FRIENDLY ATMOSPHERE

PHS Beta Club win 2nd Living Literature title at State Convention

Students will have to pay for rental cars, gas, convention fees, and hotel fees. To be eligible to compete at the national level, they have to place in the top five in at least one competition at the State Beta Convention. Our Living Lit Betas have done just that for the past six years, with the last two years placing as Champions! Yet, never in these six years has the Beta club competed at Nationals because the costs have been too prohibitive. This year's scene is the best they have ever created, and firmly believe that they can place in the top five at the National Beta Convention. However, the Beta club cannot compete without your financial help.

The Betas now ask that - in addition to the Tribe, who will help yet again with the myriad fundraisers going on at school - the entire community to come together to raise the necessary funds to get the Beta Club to Savannah, GA, so that they can finally compete at the national level. No donation is too small, and the Club thanks you in advance for your generosity. Interested in spon-

soring our Beta students at the National Beta Competition? Contact Mrs. Angela Skinner or contact Eles Renfroe at eles.renfroe@rcsd.ms or call 601-854-8135 for more information. Donations can also be made to the Beta Club's GoFundMe page: <https://gofund.me/5be9e140>.

The Beta Club wishes to thank all Tribe members who were involved for their help.



Melanie Ball

Photos special to Pelahatchie News



PES continues Hearts Around the World project



Special to Pelahatchie News

By Robin Sanders,
Principal, Pelahatchie
Elementary School

The Hearts Around the World project started as something fun to try to show the students that people from other parts of the world care and know about Pelahatchie Elementary. Teachers, staff, parents, guardians, and friends of friends at Pelahatchie Elementary shared an image with details about Hearts Around the World and how we would love to receive Valentines from different countries and states on social media to show our students that there is more out there than just our great small town. We were all amazed at the amount of Valentines that were received that first year. This fun project has now become a tradition at Pelahatchie Elementary that the students look forward to each year!

This is the third year to do the Hearts Around the World Project. The responses that were received this year have been the biggest yet!



Special to Pelahatchie News

The teachers were amazed when the cards started being delivered. Fourth-grade student, Mary Paisley, says, "It's fun to look at and read the cards! People put their hearts into it to show how they care about us." So far, cards have been received from thirty-two out of the fifty states in the U.S. Cards were also received from countries such as Mexico, Italy, Scotland, Australia, the Netherlands, Canada, The United King-

dom, and Germany. Sixth-grade student, Tynsley, says, "It's a really creative idea. The cards come from everywhere around the world! The fact that it came here to Pelahatchie is cool!" Fifth-grade student, Corban, agrees with Tynsley and says, "I think it's a smart idea because we have seen all of the cards from all of these places that have come all the way to Pelahatchie." It has truly been an amazing project for everyone.



Trustmark
Banking and Financial Solutions

East Rankin Academy Announces 1st Semester ACT 30 or Above Club



Special to Pelahatchie News

The following 10th-12th grade students are being recognized for having ACT scores of 30 or above for first semester of the 2023-24 school year. Front row, left to right: Evan McIlwain, Paige Mayatte, Lane Riemann, Audrey Mayatte, Abigail Stevens, Lainey Channell, Audrey Hawk, and Lydia Collipp. Back row, left to right: Weston Whittington, Cooper Lytton, Jackson Fountain, Hudson Hawk, Abram Rowell, and Cole Cotnam.

RIVERS
Greenhouse & Garden
The meadow

Like US.

601-825-9816
4664 Hwy 18
Brandon MS
Only 13 miles
from Home Depot
MONDAY - FRIDAY 8-5
SATURDAY 8-4

Pelahatchie
THE PLACE TO PROSPER
PRESENTS
EASTER
Hunt
EGG

30TH MARCH, 2024
AT THE MUSCADINE PARK

10 AM
Free Entry For All

FOR MORE INFORMATION:
CALL CITY HALL (601) 854-5224
CITY HALL IS ACCEPTING CANDY DONATIONS

City Welcomes New Farmer's Market a Hub for Local Commerce, Community

By Kenneth McDade

Pelahatchie, a quaint town nestled in Mississippi, is about to witness the emergence of a new community hub, all thanks to the initiative of one passionate resident, Grace Sanders. Drawing inspiration from her hometown of Hattiesburg, Grace has taken the initiative to establish a farmer's market in Pelahatchie, aiming to support local farmers and artisans while fostering community engagement.

Muscadine Park, located at Go Forth Street, will soon transform into the bustling venue for the Pelahatchie Farmer's Market. Grace recognized the need for a local gathering spot akin to those she frequented in her previous hometown. Her vision for the market is not only to provide a platform for local farmers and vendors but also to create a space where residents can come together, shop, and socialize.

The market is scheduled to operate on the second or third Saturday of each month from April through December, opening its gates from 9 AM to 1 PM. Prospective vendors are required to submit applications online, ensuring adher-



Special to Pelahatchie News

ence to the market's rules and regulations, which include product guidelines and check-in requirements. The market aims for a balanced offering, with 60% of products being fresh produce and the remaining 40% comprising dairy, meats, food items, artwork, crafts, and more.

In addition to promoting local agriculture, the Pelahatchie Farmer's Market welcomes participation from nonprofit organizations, providing them with

a platform to raise awareness or funds for their causes. However, the market maintains strict guidelines, ensuring that products and messages align with the overall ethos of community support and positivity.

Grace Sanders, the driving force behind this initiative, encourages community involvement in various aspects of the market. From vendors showcasing their goods to local musicians provid-

ing entertainment during market hours, Pelahatchie residents are invited to contribute to the vibrant atmosphere that the market seeks to cultivate.

Reflecting on the importance of the market's establishment, Grace emphasizes its potential to not only stimulate local commerce but also to strengthen community bonds. "I believe that the Pelahatchie Farmer's Market will serve as a focal point for our town, bringing people together and fostering a sense of pride in our local produce and craftsmanship," she remarked.

As the countdown to the inaugural market day begins, excitement builds among Pelahatchie residents, eager to experience the charm and vibrancy that the Farmer's Market promises to bring to their town. With Grace Sanders at the helm, supported by dedicated volunteers and vendors, the Pelahatchie Farmer's Market is poised to become a beloved fixture in the town's social and economic landscape.

For further information regarding vendor applications, market dates, or general inquiries, interested individuals are encouraged to contact Grace Sanders at 601-466-9179.

NOW TAKING APPLICATIONS

1 & 2 BEDROOMS PELAHATCHIE APARTMENTS

713 College Street, Pelahatchie, MS 39145
601-854-5814, TTY: 711

OFFICE HOURS:

Monday & Wednesday, 8:00a.m. – 5:00p.m.

*Appliances Furnished • Central Heat & Air
Laundry Facilities • HUD Vouchers Accepted
Accepts referrals from MS Olmstead Initiative Network
and Community Mental Health Centers*

For more information or to place an application call the office number listed above or come by the office during office hours.



J&A Management
Corinth, MS
662-287-6158



"This institution is an equal opportunity provider and employee."

PHS Porter and Jones awarded District Coaches of the Year



Recently, PHS basketball Coach Jerrick Porter was chosen as the Boys District Coach of the Year. He is assisted by Coach Harvey and Coach Thomas.



Photos special to Pelahatchie News

Congratulations to our Girls District Coach of the Year Coach Alexia Jones. She is assisted by Coach McNair and Coach A (Boyd-Hampton).

EZ WHEELS INC.



For Earth. For Life.

Your authorized Kubota dealer!
601-854-5112 601-854-5162



[https://www.facebook.com/
PelahatchieNews/](https://www.facebook.com/PelahatchieNews/)

Come see us on Facebook!

PHS Sanders candidate for U.S. Presidential Scholars

Special to Pelahatchie News

Payton Sanders is one of three Rankin County School District seniors selected for this prestigious honor. She is a senior at Pelahatchie High School.

The United States Presidential Scholars Program was established in 1964, by Executive Order of the President, to recognize and honor some of our Nation's most distinguished graduating high school seniors.

Each year, up to 161 students are named U.S. Presidential Scholars, one of the Nation's highest honors for high school students. The Scholars represent excellence in education and the promise of greatness in young people. In honoring the U.S. Presidential Scholars, the President of the United States symbolically honors all graduating high school seniors of high potential.

For more than 59 years, this unique federal program has honored over 8,000 U.S. Presidential Scholars, who have demonstrated leadership, scholarship, and contribution to school and



Special to Pelahatchie News

Payton Sanders

community. The work of the Commission on Presidential Scholars reaffirms, on behalf of the President, the Nation's commitment to education.

Pelahatchie Library March Events

SPRING BREAK ICE CREAM SOCIAL
WEDNESDAY, MARCH 13, 2:00 P.M.

SPONSORED BY HUMANA



SENIOR CITIZENS SOCIAL
TUESDAY, MARCH 12, 11:00 A.M.
TUESDAY, MARCH 26, 11:00 A.M.

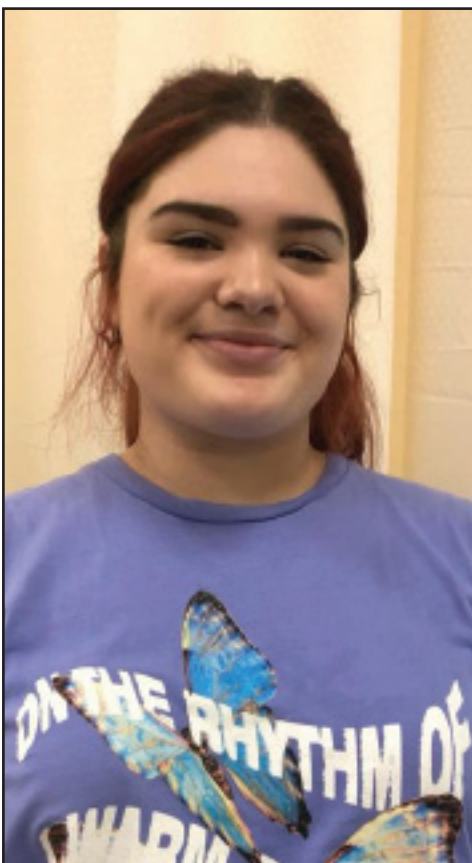
ADULT BOOK CLUB
WEDNESDAY, MARCH 20, 11:00 A.M.
DISCUSSING *BENEATH COPPER FALLS*
BY COLLEEN COBLE



COME AND JOIN US!



CTE Awareness Month: PHS students place at HOSA district competition



Photos special to Pelahatchie News

The Health Science Academy participated in the HOSA District Competitions and we are so proud to announce that Jessie Stewart made it into the top 10 and placed eighth in the entire central district in the Behavior Health section, and Isabel Brown won second place in the entire central district for her research poster entry!

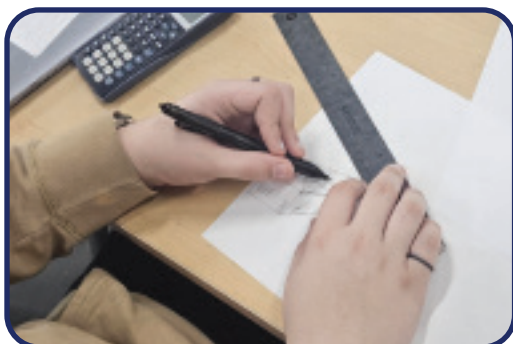
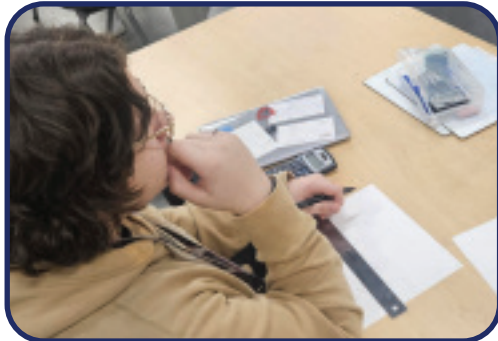
THE BRANCH
Come check our new Spring arrivals

Rankin County Co-op

CTE connecting the perspective of engineering and drawing

Special to Pelahatchie News

They say there's six degrees of connection in the world. At Pelahatchie, our teachers love that there are less than three feet of separation between subjects. Mrs. Nutt's CTE - Engineering I students are learning about the purpose of technical drawing and freehand sketches. Presenting a mini demonstration workshop, Mr. Jordan (PHS Art teacher) stopped by and gave a lesson on perspective drawing, demonstrating how artists use vanishing points to create depth and dimension on a flat surface. Students followed along and drew their own perspective drawing of a house, applying the techniques demonstrated. "Scientists study the world as it is, engineers create the world that never has been." - Theodore von Kármán (The First National Medal of Science recipient, 1962) We love seeing our Engineering students leveling up and the real-world applications they apply.



Photos special to Pelahatchie News

GRIEF SUPPORT GROUP

Help and encouragement after the death of a loved one

GriefShare is a special weekly seminar and support group designed to help you rebuild your life. We know it hurts, and we want to help.

Sundays 2:30 p.m.
Beginning March 10, 2024

Cross Roads Baptist Church
104 Crossroads Rd, Pelahatchie, MS 39145
(601) 546-2297



Crooked Creek Animal Hospital, Inc.



Charles M. Edwards II, DVM
Staci L. Rhodes, DVM
Jenny Sowell, DVM
Katlyn Hennings, DVM
Susan Thrash, DVM

123 Pleasant Pace Dr.
Pelahatchie, MS
www.crookedcreekanimal.com
Phone: 601-854-7808
Fax: 601-854-7810

Crooked Creek Lodge
601-812-7012
ccahlodge@gmail.com

Follow us on:

-  www.facebook.com/CrookedCreekAH
-  www.instagram.com/ccanimalhospital
-  www.facebook.com/CrookedCreekLodge

Rankin County School District National Counseling Week Spotlight



Special to Pelahatchie News

National Counseling Week Spotlight: Our counselors are the architects of success, helping students build bright futures. Join us in expressing gratitude for their invaluable contributions. Your dedication transforms lives, and we are grateful for your positive impact on our school community.

Griffin Family Medical Clinic
507 Hwy 80 West, Pelahatchie, MS 39145
601-854-8002

Schedule your routine checkup or wellness visit.
Call us today to schedule your appointment.

For each petal on the shamrock,
this brings a wish your way.
Good health, good luck, and happiness
for today and every day.

*Happy
St. Patrick's Day!*

Mary Ann Griffin, CFNP • Kim Risher • Keli Robertson

Pelahatchie HS archery team competes at tournament



Photos special to Pelahatchie News

The Pelahatchie Chiefs High School archery team set a new school record shooting of 3,177. During the competition, they were second overall in the Pisgah Dragons Classic Tournament. Top shooters include Lawson Burnham with a 284, Anthony Pasqua with a 274, and Kiersten Martin with a 272.

Fusion Martial Arts
503 2nd St., Pelahatchie, MS
601-941-3937
Michael Harvey - Owner/Instructor

Now enrolling new students!
Classes held Mondays and Thursdays
5:30-6:15 - Beginner/Shadow Moogi
6:00-6:45 - Beginner/Intermediate
6:45-7:30 - Adult/Advanced

Merchant RCSD Secondary Employee of the Month



Photos special to Pelahatchie News

Congratulations to Pelahatchie High School (PHS) Transportation Supervisor, Dustin Merchant, on being selected as RCSD's Secondary Employee of the Month. Mr. Merchant is such an important member of the PHS Tribe. His hard work and efforts making the campus better today than yesterday do not go unnoticed.

Pelahatchie HS Welding team headed to District



Special to Pelahatchie News

Congratulations to our PHS Welding Team who placed second at Federation Competition. They will be representing the school at the District Competition. Photographed: L to R: Lawton Burnham, Ethan Stevens, and Hayden Johnson.



Spring INTO KaChing!

SHOP AND SAVE
Local discounts and national retailer deals to save you money on shopping, dining, travel and more.

ROADSIDE ASSISTANCE
Available 24/7 and free to use, up to \$80 in covered service charges.

AND MORE!

Visit www.priorityonebank.com to see the full list of account benefits!



ERA athletes make all-tournament



Special to Pelahatchie News

Recently, three East Rankin Academy Lady Patriots were named to the 2024 North 5A All-Tournament Team. These students included Presley Thompson, Liz Stevens, and Holly Jackson.

Local student pages in MS House



Special to Pelahatchie News

Olivia Cook of Pelahatchie recently served as a page for the Mississippi House of Representatives. Pages generally run errands for officials and House staff. Cook, 15, is the daughter of Carrie and Jason Cook, and she is a sophomore at Park Place Christian Academy. She was sponsored for the week by Representative Jonathan Ray Lancaster (R – Houston). When asked about her week at the Capitol, Cook said, "I loved getting to serve as a page in the Mississippi House of Representatives. Thank you to Mr. Lancaster for this opportunity." Photo (L-R): Rep. Jon Lancaster, fellow page Addison Nash, Olivia Cook, and Speaker Jason White.

PES celebrates National School Resource Officer Appreciation Day



Special to Pelahatchie News

Recently, Pelahatchie Elementary recognized Officer John for all he does to keep them safe on campus in honor of National School Resource Officer Appreciation Day. "We are so thankful to have him here with us every day!"

SUNSET CONCERTS

Vicksburg Convention Center

MARCH 22	MS MARSHALL DELUXE
	5pm
APRIL 5	THE B.A.R. BAND FEATURING ANDREW "6 STRING" SULLIVAN
	5pm
APRIL 19	COMPOZITIONZ & THE CHILL
	6pm

All concerts are free with bar and charcuterie available



vicksburgconventioncenter.com
601-630-2929 For more information
Event made possible through a grant from Visit Vicksburg

APRIL 19-20 VICKSBURG ARTS AND MUSIC FESTIVAL



FEATURING:

- The Chill
- Projekt
- Pop Fiction
- MS Marshall Deluxe
- Compozitionz
- DJ KG, DJ LEE
- And many more

Event Sponsors





601-630-2929
www.vicksburgconventioncenter.com

This project is partially funded by grants through Visit Mississippi and MS Delta National Heritage

PES Hall RCSD Teacher of the Month



Special to Pelahatchie News

Congratulations to 2nd grade teacher, Mrs. Sharon Hall. She was named RCSD's Elementary Teacher of the Month. We are so grateful for all the Mrs. Hall does to help all learners grow, and we are thankful that she is a part of our team.

PHS celebrates first Esports win



Special to Pelahatchie News

Congratulations to Jamaal Longino and Braden Laughlin on their recent win over Madden. They both dominated their opponents, sweeping the first two out of three games, giving PHS its first ever esports victories.

PELAHATCHIE NEWS NETWORK



PAST HEADLINES

2014 - 10 years ago

- “Venture students enlightened at *The Bell Assembly Workshop*”
- “Beeman makes national baseball team”

2019 - 5 years ago

- “Everitt films on location in Pelahatchie”
- “Sojourner wins Barrel Horse awards, qualifies for finals”

2023 - Last Year

- “State Route 43 overlay planned in Rankin County”
- “MEMA launches new MEMA Media Guidebook for 2023”



**It's not just a generator.
It's a power move.**

Receive a free 7-year warranty with qualifying purchase* - valued at \$735.

Call 601-460-0256 to schedule your free quote!

*Terms and Conditions apply.



The importance and presence of potassium in plant life



By Doug Carter, Rankin County Extension Agent

Special to Pelahatchie News

Potassium is one of the nutrients needed by plants. Potassium (K) is absorbed in large amounts by plants. Potassium uptake by crops under good growing conditions is high, often equal to nitrogen (N) uptake. Potassium is used in photosynthesis, sugar transport, water and nutrient movement, protein synthesis, and starch formation by plants. Adequate potassium in plants increases disease resistance, water stress tolerance, winter hardiness, tolerance to plant pests, and uptake efficiency of other nutrients. Potassium mobility is often related to soil texture. Movement is greatest in soils with more sand content. The buildup of potassium in soils is related to soil texture, with the greatest accumulation generally in clay soils, followed by loam and course-textured sands.

Plants lacking potassium will have shortened internodes, weak stalks, excessive lodging, and more leaf and stalk disease. They also will be lighter green when viewed from a distance. Severe deficiency will cause leaf drying along outer margins. Because potassium is mobile in plants,



Special to Pelahatchie News

symptoms begin at the tips of lower leaves and move up the plant as the deficiency persists.

The inner portions of the leaves may have a stripped appearance. This is often confused with deficiency symptoms for sulfur, magnesium, and zinc.

There are three forms of potassium “pools” in the soil: unavailable, slowly available or “fixed”, and readily available.

Unavailable potassium is within soil minerals.

Over extremely long periods, these minerals will break down and potassium will be released. However, this process is much too slow to provide full potassium needs of growing plants.

Slowly available or “fixed” potassium is trapped between layers of clay minerals. This type of potassium is not measured by soil testing procedures, but, over time, it will become plant-available. Many Mississippi soils are dominated by clays with large shrink-swell capacities (cracks form in dry seasons). These soils can fix large amounts of potassium upon drying but release substantial amounts when rewetted.

Readily available potassium is the pool measured by soil-testing procedures.

This is potassium present in the soil solution and potassium easily removed from soil clay edges. Potassium in the soil readily and regularly interchanges between the water in the soil and the clay particles.

When plants use the potassium present in the soil solutions, more potassium is released from the clay particles to the solution in response to the decrease in concentration. This interchange in the soil is extremely important to plant nutrition.



of Rankin County

For your family or business, we offer personalized coverage from a choice of insurance companies.

Our agency is committed to helping you choose the right insurance coverage for your needs.



Steven Wallace
601-825-5242
308 East Government Street
Brandon, MS
swallace@insassociate.com
www.insassociate.com



62 and **BOLDER?**



Our campus offers senior living with your choice of
• Apartments & Garden Homes for Independent Lifestyles
• Assisted Living Studios & Apartments
• Memory Support Living in Green House® Homes

Call today for your personal tour!

(601) 857-5011



2300 Seven Springs Road • Raymond, MS 39154

Pelahatchie High School Lady Chiefs District Champions



Special to Pelahatchie News

Congratulations to the Lady Chiefs for winning District. The Player of the Game for the District champions goes to the entire team. Coach Jones stated, "These girls played as a unit all the way around in tonight's game against Pisgah." Congratulations Lady Chiefs and Coaches on a much-deserved recognition. Highlight Stats of the Game: Payton Wilson - 21 Points, 9 Rebounds, 6 Steals, 2 Blocks; Addison Archie - 17 Points, 3 Rebounds, 3 Steals, 2 Assists; Breanna Ward - 15 Points, 3 Rebounds, 2 Steals, 1 Block.

BUSINESS SPOTLIGHT DIRECTORY

Edward Jones

Member SIPC

How does your portfolio measure up?
Let's review your strategy.



Jackson Pullen, AAMS™
Financial Advisor
101 High Pointe Ct Suite A
Brandon, MS 39042
601-952-4154

MKT-58940-A AECSPAD

> edwardjones.com

LAMPTON-LOVE GAS CO.



RESIDENTIAL - FARM - INDUSTRIAL
SALES & SERVICES
GAS - SYSTEMS - CARBURETION

DANIEL ROBINSON
MANAGER

PELAHATCHIE, MS
601-854-5256

Specialty Tree Service LLC
601-405-5857

Specializing in large and dangerous tree removal

Free Estimates!

Gabe Walters
601-405-5857

**Tree Removal • Tree Trimming
Stump Grinding • Lot Clearing
Debris Removal**



TOMMY MILES
AGENCY PRINCIPAL



TRI-COUNTY INSURANCE AGENCY
89 HWY 481 SOUTH
MORTON, MS 39117

Phone: (601) 732-6769
Fax: (601) 732-8777
Email: insurant@bellsouth.net



KIMBERLY BANKS, PLLC

physical address: 407 FONTAINE PLACE SUITE 101 RIDGELAND, MS 39157
mailing address: P.O. BOX 12303 JACKSON, MS 39236-2303

R 601-300-8101 K 1-855-708-0677
E KBANKS@KIMBERLYBANKSPLLC.COM
kbanks@kimberlybankspllc.com



136 Front Street
Lake, MS 39092
601-775-3400

3054 Highway 80 W.
Morton, MS 39117
601-732-3624

WOLF FUNERAL SERVICES, INC.

"Familiar faces providing personal service in your time of need."

www.wolffuneralservices.com

RICHLAND WRECKER SERVICE & AUTO REPAIR

We Go The Extra Mile • 24 Hour Service
22 Years Experience in Auto Repair

Brakes • Timing Belts • Water Pumps • Clutches • Certified A/C and More

Bus. 601-936-0003
Fax 601-936-0353

**24 HOUR
601-502-3706**

2651 Hwy. 468
Pearl, MS 39208

WE BUY JUNK CARS

TEC
SIGN UP FOR
FAST FIBER INTERNET!
TEC.COM/SIGNUP
833-TEC-FIBER

Master Card American Express Discover VISA

Crossgates Jewelers, Inc.
Tammy & Gerald Frazier
Owners

(601) 939-9313
Watch & Jewelry Repair
Custom Design

401 Cross Park Drive
Suite A
Pearl, MS 39208

Burnham crowned Teen Miss Wheelchair Mississippi 2024



Photos special to Pelahatchie News

Brelyn Burnham was recently crowned Teen Miss Wheelchair Mississippi 2024.

Steen's Creek student RCSD February student of the month



Photos special to Pelahatchie News

Congratulations to second grader Abigail Bruce from Mrs. Battee's class. She was named RCSD student of the month for the District.

Appliances For Sale

Washer - \$285 Remanufactured	Stove - \$250 Remanufactured
Dryer - \$285 Remanufactured	Stove - \$285 Natural Gas Only
Refrigerator - \$285 Frost-Free	Hot Water Heater - \$245 Low Boy, 30 Gal., Electric

60 DAY WARRANTY
\$85-\$95 DELIVERY & COMPLETE SET-UP

COMBO DEAL \$1,175
Washer • Dryer • Stove
Refrigerator

For More Information CALL MILTON
Licensed Maytag Repairman
with 42 Years Experience
@ (601) 983-4777

MULTICRAFT INTERNATIONAL
INNOVATION MULTIPLIED

4341 Hwy 80 Pelahatchie, MS 39145

COME JOIN THE MULTICRAFT TEAM
GREAT BENEFITS AND 10 PAID HOLIDAYS

POSITIONS AVAILABLE
Plant Assemblers
Day and Night Shifts Available

Visit website for full job descriptions & application
www.Multicraft.com/Careers

Apply on-line or walk-ins Welcome
Resumes may be faxed to 601-854-1258
Or emailed to Patrice.bailey@multicraft.com
EOE Employer

Pastor's Perspective: Beware of Cultural Christianity



By Guest Columnist, Spencer Sullivan, Pastor, Pelahatchie Baptist

Special to Pelahatchie News

For me, culture is a hard word to define fully and with clarity. Yet, I think we all understand what it is. A simplistic way to define culture is just the way of life for a group of people. Culture shapes how we do things. It shapes how we think. It shapes how we live. It's the backdrop of our lives that makes us comfortable. My wife, Melanie, and I were both born and raised right here in Rankin County. We share the same home culture as most all of you. However, a few years after we married, we moved and then lived overseas for 12 years. Through that season of our lives, we had to learn other cultures and adapt in order to settle in and experience a certain level of comfort. From the very first day in the new culture, it was clear we weren't in Rankin County anymore. Culture shock is a real thing and it led to some extremely difficult days. Adjusting to a new way of life was frustrating and hard. However, we mostly grew to really appreciate and love the other cultures we experienced. In fact, we learned to adapt our own ways of doing things and even began to enjoy certain aspects of the foreign cultures more than our home culture.

But, here in Rankin County, one part of our home culture for which I am grateful is the Christian heritage that we have. This is evident through the abundance of church buildings in our towns, including right here in Pelahatchie. This is a result of the legacy of faith that has been passed down through generations. Personally,



Special to Pelahatchie News

I came to faith in Jesus when I was 7 years old right here in Rankin County. For most of my childhood, I literally lived next door to a church building. However, there are billions of people around the world that don't have this same access to the truth of the Gospel. It is only God's undeserved grace that allowed me (and you) to live in part of the world where the Gospel is preached and readily accessible. Without question, this is a tremendous blessing! However, I also believe that there is an incredibly dangerous aspect to this part of our culture. While it is a blessing to have a Christian heritage as a major part of our culture, if we're not careful, we can equate culture and heritage with salva-

tion and being right with God.

Are we saved and made right with God because of our culture? Do we go to Heaven when we die because our moms and dads believed? Is our eternity in Heaven secure because we are members of a church? Does God forgive our sin because we have good southern manners or say the blessing/grace before we eat or know to take our hats off when someone is praying? The answer to all of those questions is an emphatic no! Yet, my fear is that many of us are depending on those kinds of things to be enough. The scariest verse in all the Bible is found in Matthew 7:21 where Jesus says: "Not everyone who says to me, 'Lord, Lord,' will enter the kingdom of Heaven, but the one who does the will of my Father who is in Heaven." Jesus is giving us a clear warning that some believe themselves to be saved only to find out that they have been deceived or confused as to what God requires. You see, the Bible is clear that there is actually nothing we can 'do' to earn favor with God (Eph. 2:8-9). We cannot depend on our culture or even our church membership to save us from the punishment we deserve because of our sin against the Most High and Holy God. He actually did it all by sending His Son Jesus to do for us what we could not and cannot do for ourselves. And our only right response (the will of God the Father) is repentance (turning) from sin and faith in Jesus alone to save us (Acts 20:21). Nothing less and nothing more. Don't be deceived to think that your Christian heritage or Christian culture is the way or even part of the way. There is only one Way. And His name is Jesus.



WE SAVED YOU A SEAT

HINDS
COMMUNITY COLLEGE

1-800-HINDSCC
hindscc.edu

JACKSON | NAHC | RANKIN | RAYMOND | UTICA | VICKSBURG

In compliance with Title VI of the Civil Rights Act of 1964, Title IX, Education Amendments of 1972 of the Higher Education Act, Section 504 of the Rehabilitation Act of 1973, the Americans with Disabilities Act of 1990 and other applicable Federal and State Acts, Hinds Community College offers equal education and employment opportunities and does not discriminate on the basis of race, color, national origin, religion, sex, age, disability or veteran status in its educational programs and activities. We recognize our responsibility to provide an open and welcoming environment that fosters a culture of diversity, equity, and inclusion for employees and students to collaboratively learn, work and serve our communities. The following have been designated to handle inquiries regarding these policies:

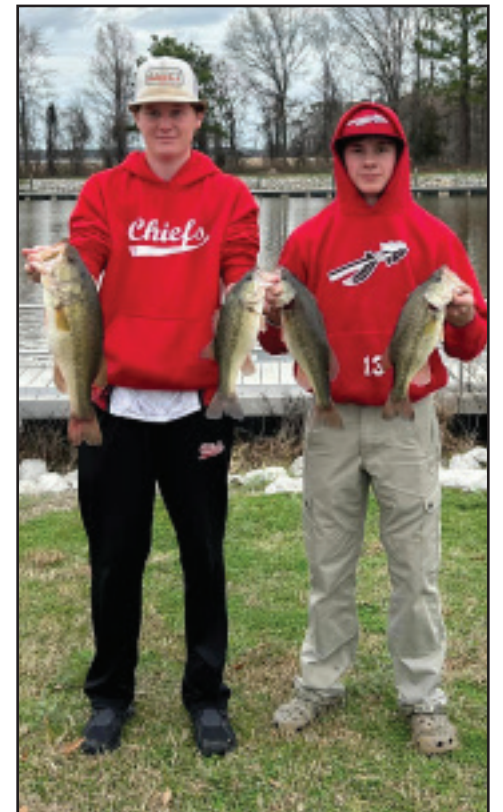
EEOC Compliance: Office of Campus Culture and Diversity, PO Box 1100 Raymond MS 39154; Phone: 601-857-3569 or Email: EEOC@hindscc.edu
Title IX: Associate Vice President Student Services, Title IX Coordinator Box 1100 Raymond MS 39154; Phone: 601-857-3353 or Email: TitleIX@hindscc.edu.

Steen's Creek takes field trip to Rodeo



Photos special to Pelahatchie News

Pelahatchie HS students place at Bass fishing tournament



Photos special to Pelahatchie News

Pelahatchie High School Bass Fishing Tournament results: congratulations to Colten Varner and Ben Mosley who finished 3rd with 11.90 lbs / 4 fish; also, Landon and Ethan caught 1 fish that weighed 3.37.



HOPPER

Real Estate Leaders



Allison Palmer
Broker Associate
REALTOR®
601-506-1420



Mary Ann Roper
Sales Associate
REALTOR®
601-720-2002

Inventory is low, and the market is HOT! Call us today to buy or sell!

HopperMS.com
12 Woodgate Drive, Suite A, Brandon, MS 39042
601-724-1435



Fruit Trees are Here!
Many different kinds,
get them before they're gone!

Winter Horse Blankets!
Wide range of
colors & sizes!

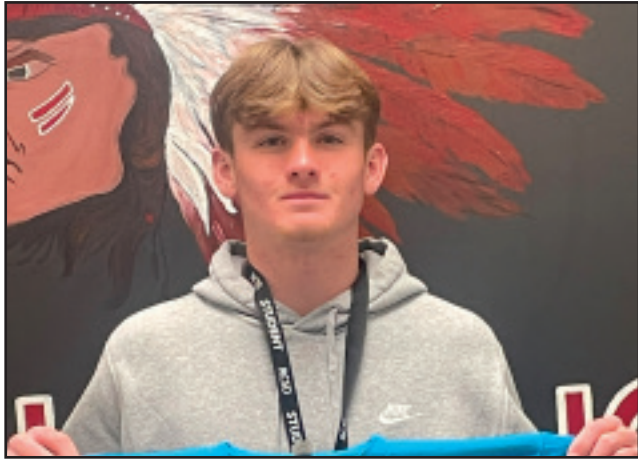
Happy St. Patrick's Day!

RANKIN COUNTY CO-OP

2861 Hwy. 80 E.,
Brandon, MS 39042
601-825-5051

Check out our website at thebranchrcc.com.

PHS Students and Faculty Member of the Month for January



Character Trait: Responsibility - Tate Hopson



7th Grade - Eriana Smith
8th Grade - Jukia Lewis
9th Grade - Rubyrae Elliott
10th Grade - Harmony McGill
11th Grade - Madden Renfroe (Not pictured)
12th Grade - Sammy Gibney



Photos special to Pelahatchie News

Staff Member - Coach Allison Hampton



Athlete - Laterrion Irvin

SUBSCRIBE

Full year subscription for only \$12

Do you enjoy **Pelahatchie News**? Then have it delivered! We are pleased to announce that Pelahatchie News is offering subscriptions for **\$12 per year**.

Fill out and mail the form below or visit pelahatchienews.com and pay with PayPal account or with any Major Credit Card to begin getting a copy delivered right to your door.

Subscriber's Name _____

Address _____

City _____ State _____ Zip _____

Email _____ Phone (____) _____

Make checks payable to: *Mansell Media*

Visit: pelahatchienews.com for more payment options.

Mail form to:
Pelahatchie News
P.O. Box 771
Pelahatchie, MS 39145

Yogi bear™, Cindy bear™, and Boo Boo™ would like to welcome you to Jellystone Park™ in Pelahatchie, MS.

JELLYSTONE PARK
Themed Weekends in
April

MARCH 29 - 31 EASTER EGGSTRAVAGANZA WEEKEND

APRIL 5-7 HOLLYWOOD WEEKEND

APRIL 19-21 CINDY'S BIRTHDAY CELEBRATION

APRIL 12-14 MYTHICAL MONSTERS WEEKEND

APRIL 26-28 CRUSTACEAN CELEBRATION

DOWNLOAD THE CAMPERSAPP IN THE APP STORE ON YOUR PHONE FOR SPECIFIC DATES AND TIMES OF UPCOMING EVENTS.

VISIT WWW.JELLYSTONEMS.COM TO VIEW EVENTS, WAYS TO STAY, AND FIND ANSWERS TO THOSE FREQUENTLY ASKED QUESTIONS UNDER THE "ABOUT THE PARK" TAB AND CLICK ON FAQs.

Yogi bear and all related character and elements © & ™ Hanna-Barbera. (S24)