



PELAHATCHIE NEWS NETWORK



November 2023 ■ Volume 12, Issue 11 ■ Pelahatchie, MS

Bridging Knowledge and Community at Pelahatchie Library

By Kenneth McDade

From my first steps as a child walking to the local library to my college years, academic librarians have always held a special place in my heart. Their dedication to guiding young and clueless students like me through the labyrinth of knowledge has been an invaluable service. Their expertise not only helped me complete my degrees but also fed my intellectual curiosity. Librarians are not just bookkeepers; they are the wizards who open doors to magic.

In the charming town of Pelahatchie, Angela Ward, a graduate of Millsap's College with a background in law from the MS College School of Law, has assumed the role of the head librarian at the Pelahatchie Library. She is the embodiment of academic prowess and community engagement, and her impact is reverberating through the town.

In her relatively short time in charge, Ms. Ward has launched the "Teen Survey" program, offering young adults

the opportunity to obtain library cards, improve their study skills, and focus on their goals. She possesses the rare ability to connect with every patron walking through the library's doors, working seamlessly with volunteers and the community.

Angela Ward's vision extends beyond the library's walls. She plans to collaborate with local businesses to promote both the library and the town's enterprises. According to Ms. Ward, the main objective is to make the community aware of the resources available. She believes that once people know what the library has to offer, it can truly help them navigate their intellectual journeys.

Word of mouth and social media, particularly Facebook, have become the library's most effective advertisements. The library offers monthly incentives and a wide range of programs catering to children, teenagers, adults, and seniors, ensuring that there is something for everyone in the community. Senior patrons, for instance, can engage in



Special to Pelahatchie News

Angela Ward

get-togethers, play Bingo, and Dominoes, or participate in a book club.

Situated conveniently in the heart of

downtown, the library is easily accessible with many locals choosing to walk there. The Pelahatchie Public Library actively participates in community events such as the Muscadine Festival and the Trunk or Treat. Even Mayor Karl Van Horn recently visited, reinforcing the library's importance in the town's cultural fabric.

It's crucial to remember that librarians aren't mere custodians of books but partners in curiosity and learning. They play critical roles in identifying valuable sources, providing access to knowledge, and paving the way for progress. Without them, both our own work and that of future generations would come to a grinding halt.

To all the librarians who have enriched my life and the lives of countless others, and to Angela Ward, who dedicates herself to this noble cause daily, we extend our heartfelt gratitude. You are the unsung heroes who deserve more credit and recognition for your invaluable contributions to our communities.

Jay White receives alumni of the year

Special to Pelahatchie News

Jay White, who graduated with a Computer Science degree in 1996 from Mississippi College (MC), received the MC 2023 Distinguished Computer Science Alumnus of the Year award during an award ceremony located at MC's Match and Science building. The ceremony was held on October 21.

White has served as the Chief Information Security Officer for Mississippi state government since 2011, providing oversight and management of the Mississippi Department of Information Technology Services (ITS) En-



Special to Pelahatchie News

Glenn Wiggins, Melissa Wiggins (Jay's Science Education Professor), Jay White and Katie White.

terprise Cybersecurity Program. In this role, he coordinates the development and implementation of cybersecurity

strategies with key government stakeholders.

In 2020, he was also named StateScoop 50's State Cybersecurity Leader of the Year, an award that honors the most influential people in the state government IT community, and the most innovative projects that advance government operations and citizen services.

White has worked in information technology for more than 25 years. He and his wife, Katie, have three children, Drew, Jordan, and Kaitlyn. White is the son of Kenneth and the late Brenda White.

PRSR STD
U.S. POSTAGE
PAID
PELAHATCHIE, MS
PERMIT NO. 4

PELAHATCHIE NEWS
P. O. BOX 771
PELAHATCHIE, MS 39145

Subscribe Today!

Call 601-990-9511

MISSISSIPPI

DENTAL CENTER
FAMILY • COSMETIC • IMPLANT
Mon 8a-7p, Tues 8a-5p
Wed 8a-5p, Fri 8a-12p
601-854-7478
www.mississippidentalcenter.com

TREATING CHILDREN, ADULTS, AND SENIORS

Cleanings • Fillings • Extractions
Whitening • Dentures • Crowns
Root Canals • Implants and More

Accepting Insurance, Medicaid,
CHIPS, and CareCredit



A CARING & FRIENDLY ATMOSPHERE

MSU's Carter selected as Mississippi Poultry Association award recipient

Special to Pelahatchie News

Benjamin Carter, of Pelahatchie, MS, is among Mississippi State students receiving a Mississippi Poultry Association award.

Carter, a senior poultry science major, was selected as a Mississippi Poultry Foundation Scholarship recipient.

MPA works closely with MSU to provide numerous scholarship opportunities for outstanding students. Through an annual auction, MPA raises funds to support future poultry industry leaders. Donors include First Financial Bank, International Paper, BankPlus, Southern AgCredit, and First South Farm Credit.

The MPF Scholarship and Endowment are awarded to students who show strong academics, community involvement, and interest in poultry science. The awards are given to graduating high school students or college students majoring in poultry science or studying poultry-related fields. The endowment was established by the MPF Board of Trustees and administered through the MSU Foundation.

"The Mississippi Poultry Association and Mississippi Poultry Foundation work to help students toward graduation and an employment that helps feed the world," said MPA President Mark Leggett. "There is 100% job placement in the poultry



Special to Pelahatchie News

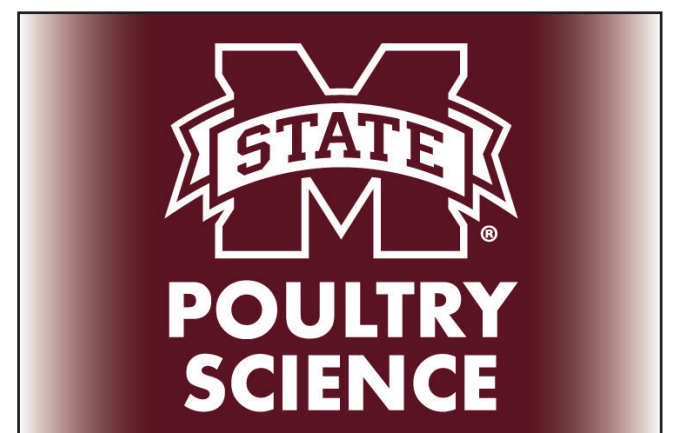
Benjamin Carter

industry. Career advancement, especially for those who go into management at processing plants, is another reason for students to pursue poultry. There is also the knowledge that you are helping to feed the world. Poultry is the most consumed protein in the United States and growing rapidly around the world because of its affordability."

Mississippi's poultry industry is the largest agriculture enterprise within the state and holds a \$3.8 billion value of production.

The MSU Department of Poultry Science is one of only six poultry science degree-granting departments in the U.S. For more information, visit www.poultry.msstate.edu.

For more information about the Mississippi Poultry Association, visit www.ms poultry.org.



P.O. Box 771
Pelahatchie, MS 39145
Volume 12 Issue 11
Circulation - 3,600

Publisher
Clay Mansell
claymansell@pelahatchienews.com

Sales
Judy Duke, (601) 706-9237 x2
sales@pelatchienews.com

Social Media Manager
Susie A. Wolfe, (601) 566-1932 x2
susieawolfe@gmail.com

Writers
Kenneth McDade, Katie White

City Beat Writer
Ashley Longmire

Graphic Designer
Holly Embry
designer@swrankinnews.com

Office Manager
Doris Bynum, (601) 566-1932 x0

For submission information, email
news@pelahatchienews.com.

Pelahatchie News is published on the first Tuesday of every month in Pelahatchie, MS.

Copyright 2023. All rights reserved. Materials may not be reproduced in whole or in part without written permission of the publisher.



Find us on Facebook
www.facebook.com/PelahatchieNews

Pelahatchie HS Attendance Matters!



By Guest Columnist, Voncille Anderson, Head Principal, Pelahatchie High School

Did you know that missing 10 percent or more of school days due to absence for any reason—excused, unexcused, and suspensions—can translate into students having difficulty learning to read by the third-grade, achieving in middle school, and graduating from high school?

Occasional absences related to health reasons are to be expected. However, absences can quickly add up.

Every day a student is absent is a lost opportunity for learning. Too many absences not only can affect achievement for the absent student but also can disrupt learning for the entire class.

During the months of October and November, Pelahatchie High School will highlight perfect attendance with a focus on clubs and extracurricular activities. Each day, we will check attendance for a specific group. If all

members of the group are present, the name of that group will be placed in a drawing for a special treat at the end of the month. In October, all members of the group must be in at-



tendance for the group to be entered into the drawing. In November, each student from the highlighted group will receive a treat. Students must be present in order to receive the treat.

Parents, here are a few ways to make

school attendance a priority.

Talk about the importance of showing up to school every day.

Develop backup plans for getting to school if something comes up. Call on a family member, a neighbor or another parent.

Help maintain daily routines, such as finishing homework and getting a good night's sleep.

Make sure phones, iPads, and laptops are put away before bedtime.

Try to schedule extended trips when school isn't in session.

Try to schedule doctor's appointments after school hours.

Stay engaged with the school by talking with teachers, checking PowerSchool and Canvas, and monitoring your child's academic progress.

Note: If any parent, local support group, or business would like to donate treats during the November Attendance Campaign, feel free to contact the school. Thank you for your support.

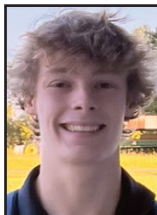
School attendance is one way for our Chiefs to LevelUp! Go Chiefs!!



Trustmark
Banking and Financial Solutions

Chiefs make comeback against Pisgah Dragons

By Cooper Lytton



Special to Pelahatchie News

On October 13, the Pelahatchie Chiefs faced the Pisgah Dragons. After falling to Leake County by one point the week before, the Chiefs were eager to make a statement against the Dragons. On the other hand, a one point loss against the

St. Andrew's Episcopal Saints fueled the Dragon's desire to win. The Chiefs were 1-6 while the Pisgah Dragons were 2-5.

As always, the Chief's key component is their run game. So far this season, the Chief's biggest threat has been freshman running back Damarion Snow. Snow has had multiple 100+ yard performances, one of which against St. Andrew's Episcopal, where he racked up 233 rushing yards.

Like Pelahatchie, running the ball is the

strongest part of Pisgah's game. Senior running back Paxton Cottingham has accumulated over 1,000 rushing yards this season, averaging 116.3 per game. Additionally, Cottingham has scored 13 touchdowns on the season.

The first quarter was rough for both teams, each having multiple turnovers on downs. At one point, Chiefs junior quarterback Javion Magee almost connected to junior wide receiver Myles Stringer on a deep pass, but it resulted in an incompletion. For both teams, their lack of success was due to an unusually slow start running the ball.

After a scoreless first quarter, the Dragons quickly jumped to an 8-0 lead. On the first set of downs of the quarter, Paxton Cottingham made a touchdown run up the left side and ran up the middle on the next play for a two-point conversion to give them the lead.

The Chiefs started off their drive strong with a 42 yard kickoff return from soph-

omore linebacker Ryder Phillips. Running backs Damarion Snow and Tate Hopson collaborated on multiple rushes to put the Chiefs past the 50 yard line. Wide receiver Myles Stringer then ran a screen route and was able to get 45 yards after the catch for a touchdown to shorten the lead to 8-7.

The Chiefs continued their dominance, shutting down the Pisgah run game and forcing a punt. A run from Tate Hopson and a catch from Ethan Hagood put the Chiefs towards the middle of the field. Unfortunately, two false starts pushed the Chiefs back to 1st and 20, and after an incomplete pass from Javion Magee, the Chiefs were left to punt to cap off the half.

To begin the third quarter, Pisgah began with bad field position after a fumble on the kickoff. The Dragons quickly turned it around, however, driving downfield with Paxton Cottingham into field goal range. On fourth down, sophomore

quarterback Parker Hill threw an incomplete pass for a turnover on downs.

With the ball back, Pelahatchie senior wide receiver Braden Laughlin had a 10 yard reception for a first down. Under pressure, Javion Magee ran up the middle for a 50 yard touchdown to put the Chiefs up 13-8. During a two-point conversion, Magee targeted Tate Hopson but the pass was too low and ruled incomplete.



THE BRANCH DON'T FORGET TO CHECK OUT **BLACK FRIDAY SALES** ON **NOVEMBER 24!!**

Rankin County Co-op

MULTICRAFT INTERNATIONAL
INNOVATION MULTIPLIED

4341 Hwy 80 Pelahatchie, MS 39145

COME JOIN THE MULTICRAFT TEAM
GREAT BENEFITS AND 10 PAID HOLIDAYS

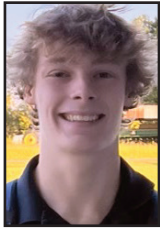
POSITIONS AVAILABLE
Plant Assemblers
Day and Night Shifts Available

Visit website for full job descriptions & application
www.Multicraft.com/Careers

Apply on-line or walk-ins Welcome
Resumes may be faxed to 601-854-1258
Or emailed to Patrice.bailey@multicraft.com
EOE Employer

Pelahatchie Chiefs struggle, Puckett Wolves claim victory

By Cooper Lytton



Special to
Pelahatchie News

On October 20, the Pelahatchie Chiefs hosted the Puckett Wolves for the Chiefs' senior night. The Chiefs were undefeated in district play, having claimed victory over the St. Andrew's Episcopal Saints and Pisgah Dragons. In addition, the Chiefs had a five-year win streak over the Wolves, outscoring them 222-45 since 2017. On the other hand, the Wolves were 6-2 on the season and fresh off of a 34-7 win against the St. Andrew's Episcopal Saints.

The Chiefs and Wolves share one trait: they run the ball a lot. The Chiefs have amassed 853 rushing yards, almost twice as much as they have thrown. Conversely, the Wolves have averaged 166.8 rushing yards per game with junior Javarius Fletcher averaging 116.2.

Upon winning the toss, the Chiefs began with the ball. The Wolves quickly shut down the Chiefs run game, forcing a three and out. On the punt, the ball found its way to the sideline at about the 50 yard line, setting up the Wolves with good field position.

The Wolves did not stop their aggression, quickly driving into scoring position with runs from Javarius Fletcher. On the last play of the drive, junior quarterback Jaxon Elmore connected to junior wide receiver Jacob Jones to put the Wolves up 6-0. The Wolves also made a two-point conversion to make the score 8-0.

The Chiefs did, however, start off strong on their next drive with a 34 yard kickoff return from sophomore Tate Hopson and a 10 yard run from freshman Damarion Snow. Despite their success, a fourth down sack on Javion Magee led to a turnover on downs.

On the first play of the Wolves drive, Pelahatchie sophomore linebacker Micah Walters forced a fumble on a hit on Wolves quarterback Jaxon Elmore to recover the ball. Two plays later, Chiefs quarterback Javion Magee threw the ball intending for sophomore Ethan Hagood but it was instead intercepted by senior Montavious Wesley.

On their first play with the ball back, Javarius Fletcher made a 20 yard run up the middle, breaking multiple tackles in the process and collecting a first down. To end the first quarter, junior Samuelle Gray broke to the right side and ran for 35 yards.

To begin the second quarter, Javarius Fletcher ran up the middle for a 15 yard touchdown, extending the Wolves lead to 14.



The Chiefs battled back, scoring on a slant from Myles Stringer for a 30 yard touchdown. Additionally, the Chiefs' defense forced a quick punt on multiple incomplete passes from Jaxon Elmore.

The Wolves, however, capitalized when they recovered a fumble after the returner dropped the punt. Javarius Fletcher ran up the middle, collecting a first down. Jaxon Elmore threw an incomplete pass intended for junior Jacory Bland, and didn't convert on fourth down after a clutch stop on Javarius Fletcher from sophomore defensive end Anthony Boyd.

Without pause, Puckett forced a punt after an incomplete pass from the Chiefs on third down. On the punt, Puckett blocked it and returned it for a touchdown to further their lead to 20-7. The extra point was blocked by Ethan Hagood.

The Chiefs fought back, returning the kickoff with Ethan Hagood for 41 yards. Also, quarterback Javion Ma-

gee found sophomore Ryder Phillips for a 30 yard gain. The drive concluded when Magee targeted junior Devin Lott on a deep pass but the pass was incomplete.

On the first play of Puckett's drive, Samuelle Gray beat a defender on a vertical route and was wide open for a 56-yard touchdown pass. After the two-point conversion, the Wolves were up 28-7 going into halftime.

To begin the second half, Jaxon Elmore completed a 20 yard pass to Jacory Bland, and on the next play, fooled the Chief's defense on a read-option for a 52 yard touchdown to lead 34-7.

The Chiefs continued to struggle when an underthrown pass on a post route to Myles Stringer gave the Chiefs no other option but to punt. On the punt, Tate Hopson pulled a trick play and was able to obtain a first down to continue to drive. To keep the momentum rolling, Demarion Snow collected 22 yards after breaking multiple tackles and Ryder Phillips grabbed a 10-yard first down on a screen. On the final play of the drive, Javion Magee rolled out to his left and threw to senior wide receiver Braden Laughlin to grab the Chiefs' second touchdown of the game. A Wolves' blocked extra point left the Chiefs with a 34-13 deficit.

Jacory Bland almost collected the Wolves' 7th touchdown of the night on a 68 yard run but it was called back for a block in the back. Javarius Fletcher did however collect a 15-yard first down in which he broke several tackles. The Chiefs struck back when Myles Stringer intercepted a pass from Jaxon Elmore to give the Chiefs possession.

To the Wolves' advantage, Jacob Jones forced a fumble on a reverse by Ethan Hagood to regain possession. Furthermore, Samuelle Gray started the fourth quarter by making a defender miss and scoring a 50-yard rushing touchdown. The Wolves collected the two point conversion to lengthen their lead 42-13.

With the ball back, Chiefs' quarterback Javion Magee handed the ball off to junior running back Jamaal Longino on a reverse for a 15-yard first down. On third down, Magee was hurried and ran to the outside for a two yard gain, but it was not enough to convert for a first down.

After a Chiefs' punt, the Wolves found themselves with the ball once again. On third down with 2:45 to go in the fourth quarter, senior defensive end Tucker Rowell made a tackle in the backfield to bring a fourth down Wolves' punt. After a flag on a 15-yard Chiefs' reverse, the game was final. Final score: Puckett 42, Pelahatchie 13

The Chiefs' primary struggle was catching momentum when they needed it. Two more defensive stops and two more touchdowns would have put the Chiefs right back in the game. When the Chiefs do find drive, they tend to score touchdowns one after another.

Despite the tough loss, the Chiefs still have a great chance of making the playoffs thanks to their two wins in the prior weeks. As previously mentioned, it is important that the Chiefs can catch momentum and continue it.

NOW TAKING APPLICATIONS

1 & 2 BEDROOMS PELAHATCHIE APARTMENTS

713 College Street, Pelahatchie, MS 39145
601-854-5814, TTY: 711

OFFICE HOURS:

Monday & Wednesday, 8:00a.m. – 5:00p.m.

*Appliances Furnished • Central Heat & Air
Laundry Facilities • HUD Vouchers Accepted
Accepts referrals from MS Olmstead Initiative Network
and Community Mental Health Centers*

For more information or to place an application call the office number listed above or come by the office during office hours.



J&A Management
Corinth, MS
662-287-6158



"This institution is an equal opportunity provider and employee."

Pelahatchie HS band scores at state competition

Special to Pelahatchie News

The PHS Band wrapped up another competition season with drum major, guard, and percussion all receiving superior ratings at the State Evaluation. Pelahatchie Band is led by Mr. Jackson Smith. The band students have put in countless hours in the miserable summer Mississippi heat and pulled together to bring amazing musical talents together both on the sidelines and in competitions.



Photos special to Pelahatchie News

THE MUSCADINE VINE
Christmas
MARKET
SHOPPING - FAMILY - FUN
SATURDAY, DECEMBER 2nd
10:00AM til 5:00PM
Pelahatchie Davis Shopping Center
505 Second Street
CRAFTS - CLOTHING - CANDLES
TOYS - LOCAL VENDORS - ART
For more info and vendor sign up contact
Kristin 601.519.1608 or Stephanie 601.421.2226

12 Days of Giving
BUY 3 GIFT CARDS, GET 1 FREE!
Plus, We Give 10% to Charity!
November 13th - 24th, 2023

Purchase Online at:
3in1GiftCard.com

Purchase in person at BRAVO!, Broad Street, and Sal & Mookie's

Pelahatchie HS and JHS Beta Clubs hold ceremony



Senior officers on row one are Madyson McGee, president; Addison Archie, vice president; Kyra Bryant, secretary; and Melanie Ball, treasurer. Senior inductees on row two are Rylee Covert, Abbi Brown, Korbin Boydston, Mary Taylor Nutt, Ben Burnham, and Sara Myers. Senior inductees on the third row are JJ Henson, Jack Herrington, Sam Till, Skylyar Ousby, and Alex Walters.



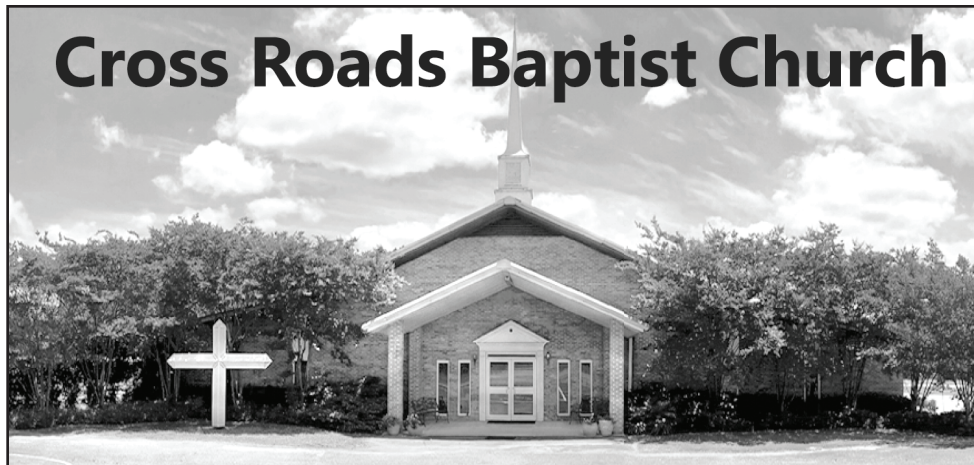
Photos special to Pelahatchie News



On October 2, Pelahatchie Attendance Center held its first combined Junior and Senior Beta Induction and Candlelight Ceremony. Following the ceremony, Kwanza Williams' company Teach for America sponsored their dinner. Beta is so grateful for such amazing support from the community. Junior officers on row one are Eriana Smith, treasurer; Landry McMillian, vice president; Katie-Belle Herrington, president; and Mallarie Adams, secretary. Junior inductees on row two are Gabriel Becker, Myla Woods, Khloe McLaurin, Chase Parker, and Eriana Smith (seated).



Cross Roads Baptist Church



Sunday Schedule:

9:00 a.m. - Worship Service
10:30 a.m. - Sunday School for all ages

Wednesday Schedule:

5:30 p.m. - Family Dinner (Call to make reservations)
6:30 p.m. - Prayer Meeting; Youth Worship; Children's Activities;
Couples Support Group; College Age Bible Study; Ladies Bible Study

Online Worship Opportunity:

(Cross Roads Baptist Church Facebook Page)
9:00 a.m. - Worship Service every Sunday

Cross Roads Baptist Church, 104 Crossroads Road, Pelahatchie, MS 39145
(601) 546-2297 • www.crbc.online

(5 miles south of Interstate 20 on Highway 43 South)




Crooked Creek Animal Hospital, Inc.

Charles M. Edwards II, DVM
Staci L. Rhodes, DVM

123 Pleasant Pace Dr.
Pelahatchie, MS
www.crookedcreekanimal.com
Phone: 601-854-7808
Fax: 601-854-7810

Crooked Creek Lodge
601-812-7012
ccahlodge@gmail.com

Follow us on:

 www.facebook.com/CrookedCreekAH
 www.instagram.com/ccanimalhospital
 www.facebook.com/CrookedCreekLodge



The Muscadine Vine gift shop opens in Pelahatchie

By Kenneth McDade

Step into a world of vibrant colors and enchanting fragrances as you step through the doors of The Muscadine Vine. Nestled in the heart of the Davis Shopping Center, this charming gift shop is a dream brought to life by the dynamic duo of Kristin Womack and Stephanie Martin. And with the unwavering support of Stephanie's husband, Blake Martin, and their quirky employee of the month, Vinny (who happens to be a fish), this store has become a beloved gem in the Pelahatchie community.

The story of The Muscadine Vine began with a shared dream between best friends Kristin and Stephanie. After years of discussions and planning, they finally summoned the courage to turn their vision into a reality. With the helping hand of Blake, they transformed their handmade crafts from street markets into a physical storefront that beckons visitors to explore its treasures.

Situated between a doctor's office and a karate center, The Muscadine Vine is a welcoming oasis of creativity waiting for curious souls to discover. The grand opening on October 14, was met with overwhelming support from the com-



munity. This unique gift shop isn't just a hodgepodge of random items; it's a carefully curated collection of products from 24 different families, all offering their handmade items and boutique creations.

Both Kristin and Stephanie were moved by the outpouring of community spirit and were quick to credit Blake Martin for his invaluable assistance in running the business and securing the location. The Muscadine Vine went from a lease signing to a bustling store in just one month, and it has been thriving ever since.

Kristin and Stephanie, proud natives of the Pelahatchie area, value the feedback

of their customers and are always eager to enhance their store. Inside, you'll find an array of delightful offerings including candles, gift wrapping, gift cards, woodwork designs, embroidery, and stylish hoodie and tee shirt designs. The store is open from Tuesday to Friday, from 10:00 am to 6:00 pm, and on Saturdays from 10:00 am to 3:00 pm, with Sundays and Mondays as their well-deserved days of rest.

But The Muscadine Vine is more than just a store; it's a hub for creativity and community. The space hosts various workshops led by guest artists, providing an opportunity for visitors to create their own crafts with expert guidance. The ladies are also masters of customer

service, always eager to listen and improve their business based on the needs of their patrons. Their children play a significant role, akin to a different branch of the Muscadine Vine, and even set up a lemonade stand during the store's grand opening. They are known as the Vine Kids.

Exciting times are ahead for The Muscadine Vine, with a vendor market scheduled for December 2, 2023. The parking lot will come alive with local vendors, food trucks, and bounce houses for the little ones, promising a festive holiday shopping experience.

You can find The Muscadine Vine at 505 Second Street in the Davis Shopping Center, Pelahatchie, MS. Be sure to connect with them on Facebook, Instagram, and Tik Tok.

So, don't hesitate to step inside and meet Kristin, Stephanie, The Vine Kids, Blake, and the ever-charming Vinny. They're all waiting to greet you and help you discover that perfect gift. The Muscadine Vine is more than a store; it's a heartwarming community treasure waiting for you to explore.



Fusion Martial Arts

503 2nd St., Pelahatchie, MS

601-941-3937

Michael Harvey - Owner/Instructor



Now enrolling new students!

Classes held Mondays and Thursdays

5:30-6:15 -Beginner/Little Dragons

6:00-6:45 - Beginner/Intermediate

6:45-7:30- Adult/Advanced

Griffin Family Medical Clinic

*We're thankful
to be here for you
and your family
through all the seasons*



Mary Ann Griffin, CFNP • Kim Risher • Keli Robertson

507 Hwy 80 West, Pelahatchie, MS 39145

601-854-8002

Bailey Joy Key and Mary Taylor Nutt compete at State Fair



Bailey Joy Key, a sixth grader at Pelahatchie Elementary School (PES), competed this past weekend at the Mississippi State Fair 2023 in the Showmanship and Beef Breeding Show. Bailey and her one-year-old red angus bull, HLTC Buford, placed first in their class. They also teamed up together to earn 5th place out of 40 in her age division for Showmanship. Bailey is an active member of the Pelahatchie FFA and represents PES in the Junior Creed speaking division at competitions. She is also an active member of the Rankin County 4H under the leadership of Heather Jennings.



Photos special to Pelahatchie News

Mary Taylor Nutt recently participated in the MS State Fair Commercial and Beef Breeding Shows. Mary Taylor placed 3rd in her division for Showmanship as well as being awarded Reserve Champion Prospect English Steer (LPF Farms). Mary Taylor presented five head of cattle at the MS State Fair Show this year.

WOULD YOU LIKE TO ADD A PROTECTION PLAN TO YOUR PURCHASE?



No thanks my bank has it covered!

**Open a KaChing! account and take advantage of our
Buyers Protection and Extended Warranty.^{1,2}**

Newly purchased items are protected for up to \$2,500 per item if theft or accidental breakage occurs during the first 180 days of purchase, when purchased using your KaChing! checking account.

 **PriorityOne**
MEMBER FDIC

1 Cell phone protection and personal identity theft benefit are subject to additional terms and conditions. 2 Insurance products are: NOT A DEPOSIT. NOT FDIC-INSURED. NOT INSURED BY ANY FEDERAL GOVERNMENT AGENCY. NOT GUARANTEED BY THE BANK.

Jellystone Park Halloween festivities a success

By Kenneth McDade

Jellystone Park in Pelahatchie, Mississippi was the Halloween haven this month, offering a spooktacular experience for visitors of all ages. From morning until evening, a slew of meticulously planned events filled the park with exuberance and joy. Ghostly apparitions roamed the woods, and mysterious sightings of hidden dinosaurs added an extra layer of intrigue. The night air echoed



with both joyful laughter and spine-tingling screams, creating a memorable atmosphere for campers. Spine-tingling stories of past camping adventures held the children's rapt attention until the eagerly awaited candy distribution. Witches, Frankenstein's Monsters, and other costumed characters lounged in lawn chairs, occasionally grumbling at some not-so-funny dad jokes and tall tales. This is the ultimate place for fellowship and cherished memories – this is Jellystone Park.

To say that this year was a success would be a significant understatement. The park welcomed an increased number of visitors, many of whom invested considerable time planning their Halloween adventures. Each campsite boasted outstanding Halloween decorations, with campers competing for the chance to win a free pass for next Hal-

loween. The results were nothing short of phenomenal. Several cabins even created their own ghostly mazes, providing delightful scares for visitors of all ages.

The Trail of Terror proved to be a spine-tingling experience, with major horror themes weaving through the dark, shadowy woods. Many new ideas were introduced on the trail this year, and the staff promises even more exciting changes for next year. While they'll keep the surprises everyone enjoys, they aim to introduce fresh elements for an ever more thrilling experience.

The park saw a plethora of notable costumes this year, with an abundance of Wednesday Addams look-alikes and blow-up dinosaurs roaming around for trick-or-treating. One creative family transformed their child's stroller into a massive pirate ship, with the entire family embracing the theme.

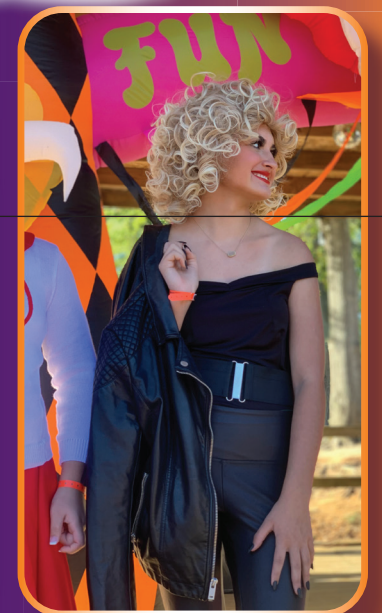
In addition to site decorations and the Trail of Terror, visitors enjoyed various activities, including trick-or-treating every Saturday from 5:00 pm to 7:00 pm, costume contests, a Halloween parade, a spooky movie screening under the stars, and various activities throughout the day.

Many attendees couldn't stop talking about returning next year, and the staff advises early booking, as reservations are already filling up fast.

Although Halloween is now behind us, Jellystone Park continues to offer wonderful experiences for guests. Day visitors can explore the park for just \$25.00 per person.

For those who wish to extend their stay, Jellystone Park provides accommodations in cabins, RVs, and tents. Booking details and more can be found on their website at jellystonems.com.

The Jellystone Park community values both their longstanding and new members and extends an invitation to everyone to become a part of the Yogi Bear and Jellystone Park Family. Call now to make reservations and join in on the fun.



Photos special to Pelahatchie News

BANKRUPTCY

CHAPTER 7
DEBT ELIMINATION

\$545 + court cost
uncontested

CHAPTER 13
DEBT CONSOLIDATION

\$37 Attorneys fees \$313 Court fee
\$50 Credit Counseling
\$400 to file

Grindstaff Law

840 E. River Place Ste 605
Jackson MS 39202
601-346-6443

121 1/2 W. Cherokee St
Brookhaven, MS
601-684-1798

WE ARE A DEBT RELIEF AGENCY, WE HELP PEOPLE FILE FOR BANKRUPTCY RELIEF UNDER BANKRUPTCY CODE

CMAA accepting student applications for scholarships

Special to Pelahatchie News

The Central Mississippi Mayors Association (CMMA) awards scholarships to senior high school students or undergraduates entering college to help cover tuition, books or fees. Applications are through December 3 through Mayors in the CMMA area, which includes the counties of Copiah, Hinds, Madison, Rankin, Simpson, Warren, and Yazoo.

Scholarships are available to individuals entering any Mississippi university, college or community college in any year (freshman, sophomore, junior or senior) as an undergraduate student. Students may utilize scholarship funds to cover tuition, books or fees only.

Applications are available for download at CMPDD.org/cmma. Applications must be typed or clearly written. Incomplete or illegible applications will not be considered, rated or returned. Applications must be received electronically or postmarked no later than 4



p.m. on Sunday, December 31, 2023.

Official high school and/or college transcripts are required, and all community service must be verifiable. Any unverifiable community service will not receive points. No student will be eligible to receive more than one CMMA scholarship per lifetime.

CMMA will appoint a committee to review applications and assign a rating value to each application according to the rating criteria. The top four applicants will be notified and invited to an interview with the appointed committee in late February 2024. \$1,000 scholarships will be awarded to two students for the 2024-2025 school year. Scholarship awards will be announced no later than May 1, 2024, for the 2024-2025 school year.

For more information, contact Candace Darby with the Central Mississippi Planning and Development District at 601-981-1511, ext. 240.

PELAHATCHIE NEWS NETWORK



PAST HEADLINES

2013 - 10 years ago

- "Biggert-Waters Act impacts flood insurance policies nationwide"
- "Pelahatchie Baptist to host Holiday Marketplace"

2018 - 5 years ago

- "Rankin County Sheriff takeover PPD"
- "Persimmon seed predicting icy, cold winter"

2022 - Last Year

- "'Coach Prime,' My Special Aflac Ducks surprise patients at Children's of Mississippi"
- "Businesses encouraged to join trafficking initiative"

Chief Deputy Thornton Promoted



Special to Pelahatchie News

Chief Deputy Dwayne Thornton has been promoted to Rankin County Undersheriff. Undersheriff Thornton is a 24 year veteran of the Rankin County Sheriff's Office. Thornton attended Pearl High School and Hinds Community College. Thornton began his career as a reserve deputy and has moved up steadily through the ranks. Undersheriff Thornton has served as a detention officer, deputy sheriff, investigator, chief investigator, and most recently as chief deputy of patrol. As Undersheriff, Thornton will oversee the day to day operations of all divisions of the sheriff's office. Undersheriff Thornton will also be over the budget and purchasing of the sheriff's office.

EZ WHEELS INC.

Kubota

For Earth. For Life.

Your authorized Kubota dealer!
601-854-5112 601-854-5162



<https://www.facebook.com/PelahatchieNews/>

Come see us on Facebook!

Preparing for cool season planting considerations



By Doug Carter, Rankin County Extension Agent

Special to Pelahatchie News

As you all know, there is a shortage of hay for this winter. Producers have lost one or two cuttings of hay this summer, because of the drought. I am getting phone calls from folks looking to buy hay. If they have any luck finding any, it is usually a long way from their farm.

One solution, in addition to feeding the hay they have or can find, is to establish winter grazing. The first step in establishing winter annuals is selecting a suitable site. The best soils for winter annuals are well-drained and fertile. Winter annuals can be established using tillage or no-till seeding. The primary advantage of using tillage to establish winter annuals, is that stands can be planted earlier and established faster to produce more fall forage when competition from existing sod is



Special to Pelahatchie News

absent. Winter sods can be broadcast planted. Broadcast planting seems to work better with ryegrass, than with other small grains. Light disking before or after broadcasting may improve soil-seed contact and result in better stands. When seed is broadcast planted, seed rates should be increased by 20 percent.

Competition from warm-season sods that have not gone dormant in the fall is the most serious problem for early sod-seeding of winter annuals. Warm-season grass on no-tilled

sods must be controlled in some way prior to planting winter annuals. Actively growing warm-season grasses rob water and nutrients from winter seedlings, and shade from tall grass canopy slows down germination and seedling growth. For best annual stands, warm-season grass residue should be no more than 2 inches tall when annuals are drilled, and warm-season grass should not be actively growing. Residue should be managed by close grazing, bush-hogging, or making hay prior to drilling.

Shallow or 1 inch disking of sods to destroy no more than 1/3 of the sod before or immediately after planting may allow earlier planting and earlier growth of winter annuals on sandy or loamy soils. Disking of heavy clay soils also is undesirable because it increases roughness of the field. Establishment of winter annuals into bahiagrass, which grows later into the fall than bermudagrass, is likely to be more difficult.

Their recommended planting date for winter annuals in Southern Mississippi is late September to late October. In Northern Mississippi winter annuals are sod seeded in early September to early October. Ryegrass and clover seeds should be planted shallower (1/8 to 1/4" depth) than larger seed small grains (1/2 to 1" depth). Planting rates vary depending on the planting method used and the species mixtures.

Sources: "Cool Season Forage Establishment and Maintenance", Mississippi State University Extension, Forage News.

Ready to sell?

More homes sold in Pelahatchie than any other agent.

Megan Hall, Realtor

Turn Key Properties

C: 601-540-4084 O: 601-427-5088

www.thetkp.com



TurnKey
PROPERTIES



Methodist
Senior Services
Celebration. Innovation. Hope.

Riggs Manor
Retirement Community

62 and
BOLDER?



Our campus offers senior living with your choice of
 • Apartments & Garden Homes for Independent Lifestyles
 • Assisted Living Studios & Apartments
 • Memory Support Living in Green House® Homes

Call today for your personal tour!

(601) 857-5011



2300 Seven Springs Road • Raymond, MS 39154

Pelahatchie HS announces 2023-24 Tech team members



Special to Pelahatchie News

The Pelahatchie High School 2023-24 Tech Team members are Jeremiah Sullivan, Jamaal Longino, Christian Beeman, Melanie Ball, and Zion Jennings. Not pictured is Logan Quick.

BUSINESS SPOTLIGHT DIRECTORY

For Daily Specials Find us on Facebook Dine-In or Call-In Orders Welcome!

CROSS ROADS STORE & GRILL
PELAHATCHIE MISSISSIPPI
1186 Hwy. 43 South • Pelahatchie
601-546-2255
Tommy & Diana Key, Owners

Live & Cooked Louisiana Style Crawfish Begins Feb. 4th
Bar-B-Que All Day Fri & Sat
Home of the Hand-pattied Burger & Pattied Hamburger Steak & Gravy

LAMPTON-LOVE GAS CO.

PEOPLE TRUST OUR PRODUCT AND SERVICE

RESIDENTIAL - FARM - INDUSTRIAL SALES & SERVICES
GAS - SYSTEMS - CARBURETION

DANIEL ROBINSON
MANAGER

PELAHATCHIE, MS
601-854-5256

WE ARE A GAS MAN COMPANY

Specialty Tree Service LLC
601-405-5857

Specializing in large and dangerous tree removal

Free Estimates!

Gabe Walters
601-405-5857

Tree Removal • Tree Trimming
Stump Grinding • Lot Clearing
Debris Removal

TOMMY MILES
AGENCY PRINCIPAL

Allstate
You're in good hands.

TRI-COUNTY INSURANCE AGENCY
89 HWY 481 SOUTH
MORTON, MS 39117

Phone: (601) 732-6769
Fax: (601) 732-8777
Email: insurant@bellsouth.net

KIMBERLY BANKS, PLLC

physical address mailing address
407 FONTAINE PLACE P.O. BOX 12303
SUITE 101 JACKSON, MS 39236-2303
RIDGELAND, MS 39157

P. 601-300-8101 F. 1-855-708-0677
E. KBANKS@KIMBERLYBANKSPLLC.COM
kbanks@kimberlybankspllc.com

136 Front Street Lake, MS 39092 601-775-3400

3054 Highway 80 W. Morton, MS 39117 601-732-3624

WOLF FUNERAL SERVICES, INC.
"Familiar faces providing personal service in your time of need."

www.wolffuneralservices.com

RICHLAND WRECKER SERVICE & AUTO REPAIR

We Go The Extra Mile • 24 Hour Service
22 Years Experience in Auto Repair

Brakes • Timing Belts • Water Pumps • Clutches • Certified A/C and More

Bus. 601-936-0003 **24 HOUR 601-502-3706** 2651 Hwy. 468
Fax 601-936-0353 Pearl, MS 39208

WE BUY JUNK CARS

TEC

SIGN UP FOR **FAST FIBER INTERNET!**
TEC.COM/SIGNUP
833-TEC-FIBER

Master Card American Express Discover VISA

Crossgates Jewelers, Inc.
Tammy & Gerald Frazier
Owners

(601) 939-9313 401 Cross Park Drive
Watch & Jewelry Repair Suite A
Custom Design Pearl, MS 39208

Pastor's Perspective: Life is but a shadow



By Guest Columnist, Spencer Sullivan, Pastor, Pelahatchie Baptist

Special to Pelahatchie News

Over the course of one week (October 13-19), our church lost two dear brothers in Christ who had been long-time members: John Ray Davis and Jim Guyse. They were both great men and our church and their families will be mourning their losses for some time. I had the honor of being part of the services for both men. Incredibly, at least to me, this is the second time this year that our church has had 2 funerals in the same week. While I count it a great honor to minister to families when loved ones pass away, I sure hope that my experience of weeks with multiple funerals is over. Brother John Ray and Brother Jim were not young, but both of their passings came quite suddenly. They were not expected in the least. In both cases, they were healthy and well one week only to be gone the next. In Jim's case, it was mere moments.

During that same time period, the Brandon Amphitheater hosted the Go Tell Crusade. Rick Gage was the primary evangelist. From October 15-18, thousands of people gathered each night to worship and to hear the powerful messages from Rick Gage and his friends. In fact, the last night of the Crusade, we were told a record crowd for the venue was present: over 10,000 people. I'm sure many of you reading this had the opportunity to attend at least one of the nights. Certainly, the messages were evangelistic in nature. Gage and the



Special to Pelahatchie News

other speakers shared their stories of coming to know Christ as they shared the Gospel message. One of the consistent themes shared by the speakers was that no one knows how long our lives will be. Just like Brother John Ray and Brother Jim, any of us could be here one day and gone the next. I think most all of us, including me, assume that we will experience a normal lifespan, but we are certainly not promised that. All of us know people whose lives were seemingly cut short. Having us consider this reality is not meant to be a scare tactic,

it's just true. None of us know how many breaths we get. There are several verses in Scripture that communicate this truth. Job 8:9 says: "For we are but of yesterday and know nothing, for our days on earth are a shadow." Psalm 102:11 says: "My days are like an evening shadow; I wither away like grass." In both of these verses, our lives are compared to shadows, present one moment and then gone the next.

In response to this truth, I'd like to challenge you to consider whether you are ready should your life come to a sudden and unexpected end. As I was visiting Brother John Ray in the hospital the day before he passed, the last thing he said to me was: "Brother Spencer, I'm ready." He didn't mean he was ready in the sense that he was tired and desired to be finished with the pains and struggles of life. He meant that he was ready because he knew Jesus. He was prepared for that moment when his life on earth would be completed. In order to be ready for that moment, we must be made right with God. We can't do that on our own because just one sin is enough to condemn us before a holy God. We can only be right before God by surrendering to Him, confessing our sin before Him and receiving through faith the forgiveness of sin that His Son Jesus paid for by dying on a cruel cross. My brothers, John Ray and Jim, were both ready for their moments because they had surrendered their lives to Jesus. Many that attended the Crusade last week are now ready for that moment because they did the same. What about you? Are you ready?

SCHEDULE A TOUR TODAY!
hindscc.edu/bright

Turn Your Passion Into a Profession!



JACKSON | NAHC | RANKIN | RAYMOND | UTICA | VICKSBURG

In compliance with Title VI of the Civil Rights Act of 1964, Title IX, Education Amendments of 1972 of the Higher Education Act, Section 504 of the Rehabilitation Act of 1973, the Americans with Disabilities Act of 1990 and other applicable Federal and State Acts, Hinds Community College offers equal education and employment opportunities and does not discriminate on the basis of race, color, national origin, religion, sex, age, disability or veteran status in its educational programs and activities. We recognize our responsibility to provide an open and welcoming environment that fosters a culture of diversity, equity, and inclusion for employees and students to collaboratively learn, work and serve our communities. The following have been designated to handle inquiries regarding these policies:

EEOC Compliance: Director of Diversity, Equity and Inclusion, Box 1100 Raymond MS 39154; Phone: 601-857-3458 or Email: EEOC@hindscc.edu.

Title IX: Associate Vice President Student Services, Title IX Coordinator, Box 1100 Raymond MS 39154; Phone: 601-857-3353 or Email: TitleIX@hindscc.edu.

HCC Pelahatchie students inducted into PTK and selected as officers

Special to Pelahatchie News

The Alpha Omicron Omega Chapter of the Phi Theta Kappa honor society at Hinds Community College Rankin Campus has inducted new members and has elected its new officers for the 2023-24 school year. Phi Theta Kappa is the international honor society for community and junior college students. An invitation for membership in Phi Theta Kappa is only extended to students who have a 3.5 cumulative grade point average or above on 12 or more transferrable credit hours. There are more than 1,200 Phi Theta Kappa chapters throughout the United States and abroad.



Special to Pelahatchie News

The new officers include, front from left, Maddie Walters of Pelahatchie, Mackenzie Stewart of Brandon, Angelica Renfro of Florence and Laura Case of Brandon; second row, Ben McBride of Jackson, Eli Boyer of Pelahatchie, Victoria Lawrence of Pearl, Courtney Hanks of Brandon, Kyndall Watts of Brandon and Kamry Johnson of Brandon.



The new inductees include, front from left, J'Keela Johnson of Richland, Constance Olexy of Pearl, Morgan Kilpatrick of Florence, Baileigh Grisham of Pearl, Irene Turcios of Brandon, Shelby Downs of Flowood, Isabelle Johnson of Brandon, Colten Graves of Brandon and Cooper Wilson of Puckett; second row, Keira Jones of Flowood, Gene Cole of Florence, Jordan Vontoure of Richland, Payton Sanders of Pelahatchie, Madeline Cannon of Pearl, Rylee Wells of Brandon, Richard Chanler of Brandon and Baxter Azlin; third row, Conner Robinson of Pisgah, Kamy Johnson of Brandon, Kyndall Watts of Brandon, Levi Filbert of Pearl, Charles Jackson of Madison, Richard Sullivan of Flowood, Claire Creswell of Brandon and Kaleb Bullock of Florence.



HOPPER
Real Estate Leaders



Allison Palmer
Broker Associate
REALTOR®
601-506-1420



Mary Ann Roper
Sales Associate
REALTOR®
601-720-2002

Inventory is low, and the market is
HOT! Call us today to buy or sell!

HopperMS.com
12 Woodgate Drive, Suite A, Brandon, MS 39042
601-724-1435

Happy Thanksgiving!

RANKIN COUNTY CO-OP

2861 Hwy. 80 E.,
Brandon, MS 39042
601-825-5051

Check out our website at thebranchrcc.com.

HOTTEST ITEMS This Week!!

East Rankin Academy Cross Country Season Concludes

Special to Pelahatchie News

The East Rankin Academy (ERA) Patriot Cross Country Team concluded their 2023 regular season on Monday, October 23rd. The Lady Patriots, entering the season as the No. 1 ranked team in the state, defended their MAIS 5A State Championship for a third consecutive year. The varsity girls' team, led by junior, Audrey Mayatte, defeated runner-up, Simpson Academy by two points. The scoring five Lady Patriots included Mayatte; eighth grader, Emma Raines; sixth grader, Jewel Baker; sophomore, Jensen Baker; and sophomore, Emily Williams.

The 2023 season kicked off with both varsity teams winning the season opener at the Simpson Academy Early Bird. This success would set the stage for both teams with the girls winning seven of their ten season matchups, including the Park Place Invitational, the Jackson Victors Kickoff, the Forerunners Night Run, the MRA Invitational and the Clinton Arrow Invitational. The varsity boys saw hard work pay off with a tremendous season of growth adding a second varsity win at the Park Place Invitational and top three team finishes at the Forerunner Night Run, the MRA Invitational and the MAIS 5A State Championship. The varsity boys' team at the state championship was led by eighth grader, Zack Price, with scoring runners contributing to the team efforts to include freshmen, Jon Riemann; junior, Jackson Fountain; eighth grader, Walker Sartin; and sophomore, John Parker Pierce.

As finalists in the top ten of the varsity 5K races, three Lady Patriots were named to the MAIS 5A All State team to include sophomore, Audrey Mayatte; eighth grader, Emma Raines; and sixth grader, Emma Raines.

Additionally, two varsity Patriots were named to the MAIS 5A All State team to include eighth grader, Zack Price, and freshmen, Jon Riemann.

The 2023 ERA team, coached by Coach David Hopper, concluded the season with the varsity Lady Patriots ranked 1st in MAIS 5A and 2nd in the MAIS overall. The varsity Patriots are ranked 1st in MAIS 5A and 4th in MAIS overall. The following ERA athletes are ranked individually in the MAIS Top 25, by grade, per MS Milesplit tracking:

PATRIOTS

Sixth: Micah Sigrest (13th); Seventh: Wyatt Smithers (20th), Christopher Chalk (25th); Eighth: Zack Price (1st), Walker Sartin (10th); Freshmen: Jon Riemann (3rd); Sophomore: RT Tate (6th), John Parker Pierce (11th); Juniors: Jackson Fountain (8th); Seniors: Grayson Blair (22nd), Gavin Thomas (24th)

LADY PATRIOTS

Sixth: Jewel Baker (1st), Chandler Hunt (5th); Seventh: Haley Headrick (5th), Kate Bryant (6th); Eighth: Emma Raines (1st); Freshmen: Leah Collipp (7th); Sophomore: Emily Williams (7th), Jensen Baker (9th), Arin Hawk (11th), Savannah Smithers (22nd); Juniors: Audrey Mayatte (1st), Rachel Smith (13th), Lydia Collipp (20th), Audrey Hawk (24th), Marlee Rakinic (25th)



Photos special to Pelahatchie News

L-R Front: Micah Sigrest, Taylor Stroh, RT Tate, Zack Price L-R Back: Grayson Blair, Gavin Thomas, JP Pierce, Jon Riemann, Walker Sartin, Hudson Hawk, Jackson Fountain



L-R Front: Leah Collipp, Arin Hawk, Kate Bryant, Emily Williams, Jewel Baker, Audrey Mayatte, Emma Raines, Jensen Baker, Haley Headrick, Rachel Smith, Chandler Hunt L-R Back: Audrey Hawk, Lane Riemann, Katie Lee Tadlock, Savannah Smithers, Marlee Rakinic, Abby Raines, Katie Simpson, Kylee Hollifield, Addison Vowell, Coach David Hopper

"Christmas is a source of
hope for those who are suffering ...
because of the true meaning
of Christmas."

ALFONZA FULLWOOD

Bittersweet memories. Loss of traditions. An empty seat at the table. The holiday season can trigger sadness and despair for people grieving a loss. Join us for a 2-hour event called Surviving the Holidays where we talk about how to deal with grief around the holiday season.

Cross Roads Baptist Church
Saturday, November 11 at 2:00 p.m.
104 Crossroads Road—Pelahatchie
601-546-2297

GRIEF SHARE

NOVEMBER AT JELLYSTONE PARK

Stay any two nights
during November and
get a free golf cart
during your stay.
Promo code: ALLIN

STAYING WITH US ON THANKSGIVING DAY??

COME JOIN US FOR THANKSGIVING DINNER

12:00 PM

\$15.00 PER PLATE

WE'LL SERVE ALL YOUR FAVORITE THANKSGIVING DISHES!
YOUR KIDS ARE NOT A FAN OF THE TRADITIONAL
THANKSGIVING MEAL? WE'LL ALSO INCORPORATE SOME YUMMY
PIZZA, BURGERS, AND CHICKEN TENDERS FOR THE KIDS AND
KIDS AT HEART.

Food items collected for ERCO Herrington MPB student council



Special to Pelahatchie News

FCCLA, Junior Beta, and Senior Beta teamed up to collect food items for ERCO. We collected a total of 368 items. Thanks to all who donated! Pictured from left to right are Landry McMillan, JJ Henson, and Kyra Bryant.



Special to Pelahatchie News

Katie Belle Herrington, an 8th grade student of Pelahatchie High School, was recently selected to become a member of the Mississippi Public Broadcasting Student Council. MPB Student Council is a diverse group of middle and high school students in grades 8th-11th from across the state of Mississippi. Members receive hands-on career training, civic engagement opportunities, increase social and media literacy skills, and lend their voices to Mississippi's progress. Students actively serve as a liaison for MPB to their peers statewide. Their primary project is the production of a podcast that focuses on topics of interest to their unique generation. Council members are responsible for sharing new knowledge from involvement in various aspects of the agency's departments, programs, and services.



of Rankin County

For your family or business, we offer personalized coverage from a choice of insurance companies.

Our agency is committed to helping you choose the right insurance coverage for your needs.



Steven Wallace
601-825-5242
308 East Government Street
Brandon, MS
swallace@insassociate.com
www.insassociate.com

SUBSCRIBE



Full year subscription for only \$12

Do you enjoy **Pelahatchie News**? Then have it delivered! We are pleased to announce that **Pelahatchie News** is offering subscriptions for **\$12 per year**.

Fill out and mail the form below or visit pelahatchienews.com and pay with PayPal account or with any Major Credit Card to begin getting a copy delivered right to your door.

Subscriber's Name _____
Address _____
City _____ State _____ Zip _____
Email _____ Phone (____) _____

Make checks payable to: *Pelahatchie News*

Visit:
pelahatchienews.com
for more payment options.

Mail form to:
Pelahatchie News
P.O. Box 771
Pelahatchie, MS 39145