



# PELAHATCHIE NEWS NETWORK



August 2024 ■ Volume 13, Issue 8 ■ Pelahatchie, MS

## Discover Southern Charm at Down Right Southern, LLC in Pelahatchie

By Kenneth McDade

Nestled in the heart of downtown Pelahatchie, Mississippi, is a hidden gem that captures the essence of Southern hospitality and creativity—Down Right Southern LLC. Founded by the dynamic duo, Natalie and Sam Yarborough, this delightful gift shop is more than just a store; it's a celebration of family, faith, and the artisanal spirit of the South.

Natalie Yarborough, a woman of many talents, brings a rich and diverse background to the table. With experience as a nurse, teacher, artist, and now a professional photographer, Natalie has channeled her multifaceted skills into creating a unique shopping experience. Alongside her husband Sam, the Yarboroughs have built a business that feels like a warm embrace from the community itself.

### A Treasure Trove of Handmade Delights

Down Right Southern LLC prides itself on offering a constantly updated inventory of personalized, handmade gifts. Whether you're searching for the perfect anniversary present, a unique birthday surprise, or seasonal decor, you're sure to find something special.



The Yarboroughs

Special to Pelahatchie News

Natalie's artistry shines through in her custom-made candles and soaps, while the shop's offerings extend to fresh flowers, custom door initials, and beautifully crafted paintings.

One of the standout features of Down Right Southern LLC is its dedication to home cooking. The Yarboroughs are specialists in Southern cuisine, boasting three published cookbooks available for purchase. The store also offers grab-and-go lunches and frozen casseroles, perfect for those busy days when home-cooked goodness is a must. And don't miss out on the cinnamon rolls baked by their 10-year-old son, Brody, which have quickly become a local favorite for any event.

### A Family Affair

What sets Down Right Southern LLC apart is its strong emphasis on family. All of the Yarborough children are homeschooled and play a vital role in the day-to-day operations of the store. From helping with local deliveries to assisting in the creation of handmade items, the entire family contributes to the shop's welcoming atmosphere.

Natalie's skills as a professional photographer add

Continued on page 2

PRSR STD  
U.S. POSTAGE  
PAID  
PELAHATCHIE, MS  
PERMIT NO. 4

PELAHATCHIE NEWS  
P. O. BOX 771  
PELAHATCHIE, MS 39145

Subscribe Today!

Call 601-566-1932

## PHS Grad, Belhaven WBB Player Hosts Youth Camp

By David Edelstein, WJTC Reporter

Pelahatchie High School likes to see alumni live out their dreams for the future. It's also good when they choose to give back to the community that helped them to grow and achieve what they needed to reach those dreams.

Pelahatchie alum, Chrystianna Beeman has chosen to do just that. She recently graduated from Jones College and is now a D3 student-athlete for Belhaven.

She says it's easy for young students to not maintain their athletic training over the course of the summer. She wants to help others keep moving by hosting her

first youth basketball camp.

Beeman continues to focus forward as she keeps growing in her basketball career, but she hasn't lost touch with where she came from.

Beeman knew that the town of Pelahatchie did not have a lot of opportunities for young athletes to grow. This is what helped inspire her to come and give back to her community. She also says that a

lot of coaches helped her to grow as an athlete. This led her in wanting to give that same inspiration to others.

Recently, Beeman partnered with

Continued on page 2



Photo courtesy of WJTV video

Pelahatchie alumna, Chrystianna Beeman, instructs student athletes at her recent youth basketball camp.

MISSISSIPPI  
DENTAL CENTER  
FAMILY • COSMETIC • IMPLANT  
501 Second Street  
Pelahatchie, MS 39145  
Mon 8a-7p, Tues 8a-5p  
Wed 8a-5p, Fri 8a-12p  
601-854-7478  
www.mississippidentalcenter.com

### TREATING CHILDREN, ADULTS, AND SENIORS

Cleanings • Fillings • Extractions  
Whitening • Dentures • Crowns  
Root Canals • Implants and More

Accepting Insurance, Medicaid,  
CHIPS, and CareCredit



A CARING & FRIENDLY ATMOSPHERE

Continued from Front page

## Discover, cont'd.

another layer of charm to the business. She offers personal and family portraits, with the option to print on canvas. From infant births to weddings and family gatherings, Natalie captures life's most precious moments. And for those looking for something a bit more intimate, her special boudoir portraits are a unique and cherished offering.

### Visit Us Today!

Located at 110 Brooks Street, right next to the Police Station, Down Right Southern LLC is a must-visit destination in Pelahatchie. Whether you're shopping for one-of-a-kind gifts, enjoying a homemade meal, or capturing memories with a family portrait, the Yarboroughs invite you to experience the warmth and creativity that define their store.

Stop by today and discover why Down Right Southern LLC is a beloved fixture in the community. With their ever-updated inventory and commitment to personalized service, you're sure to leave with a smile and a special item that speaks to the heart of Southern charm.

## Getting screened yearly can really save your skin

By Gary Pettus, UMMC

For the dozens of people screened recently for skin cancer at a University of Mississippi Medical Center clinic, the checkups were free — and priceless.

At UMMC Grants Ferry in Flowood, around 115 people were evaluated one day in May, during Skin Cancer Awareness Month; among them, screeners found 69 cases of skin cancer or pre-cancerous conditions.

The very first person examined showed signs of the deadliest skin cancer of all: melanoma.

That, and the fact that another 68 cases were discovered, underlines the value of early detection, said Dr. Stephen Helms, professor of dermatology at UMMC.

“When we find a case of cancer or pre-cancer, we give the person a list of dermatologists to see in the area, if they don't already have one.

“We do recommend that they make an appointment for a biopsy pretty soon, especially for melanoma; you



Special to Pelahatchie News

don't want to put it off.”

A biopsy is a procedure to remove a portion of a suspicious area for closer examination or to completely remove the abnormal mass, or tumor, as a potential cure for certain types of skin cancer.

Laura Beth Puhr, LPN, supervisor of clinic operations for dermatology at UMMC, said the nearly six dozen cases detected last month break down this way:

- Actinic keratoses: 50 – Untreated, this pre-cancerous condition can turn into a type of skin cancer called squamous cell carcinoma.

- Non-melanoma skin cancers: 17 – These include squamous cell carcinoma, “which can metastasize and can be very aggressive,” Helms said, and basal cell carcinoma, which accounts for about 75-80% of skin cancer cases and which can also be destructive and disfiguring if left untreated.

- Dysplastic (or atypical) nevi: 1 – A type of mole that looks different from a common mole, including in size, shape and color, a dysplastic nevus rarely turns into melanoma, but the greater the number and size of nevi, the greater the risk.

- Melanoma: 1 – It causes most skin cancer deaths, Helms said. More than 100,000 cases of this disease will be diagnosed in the U.S. this year, and more than 8,000 people are expected to die from it, reports the American Cancer Society. Melanoma can be harder to cure than other forms, but if caught early and treated, the task becomes easier and death is less likely to follow.

Held every year, the Grants Ferry screening event is sponsored by the Department of Dermatology at UMMC in partnership with the American Academy of Dermatology and the Women's Dermatologic Society.

“Our department is very appreciative for all of the people who help us with this every year and who volun-

teer,” Helms said.

Some 50 or so UMMC nurses, physicians, staff members, students and other volunteers pitched in at Grants Ferry for this year's screenings, organized by Helms, Dr. Amy Flischel, associate professor of dermatology; Dr. Thy Huynh, assistant professor of dermatology; Dr. Hannah McCowan, a preliminary medicine resident at UMMC; Walton Mallette, director of ambulatory operations for UPA Dermatology Administration; and Puhr.

“We've always had a great turnout for the screening event,” Puhr said.

“Usually, detection is early enough that we can get treatment for the patient so they don't have to worry about it. Some people who come in may have a family history of skin cancer. Others come in with spots on their skin that they are concerned about.”

One in five people in the U.S. will develop skin cancer, the most common cancer in the U.S., the American Academy of Dermatology reports.

“Usually, if you find a basal cell or squamous cell carcinoma early, it's not going to spread the way melanoma will,” Puhr said. “Which is why these screenings are so important.”

For patients with these non-melanoma cancers, physicians recommend that they get them removed within a month or so, she said. “But we don't wait on melanoma. It's done as soon as possible.”

Melanoma may even show up on unexposed areas of the body – such as the bottom of a foot, Helms said. “And it's more likely to spread to other parts of the body compared to other forms of skin cancer.

“Clearly, one of the causes related to skin cancer is exposure to sunlight, which is more intense from 10 a.m. to around 3 or 4 p.m.,” Helms said. “It's more likely to damage lighter skin, but cancer is found in darker skin as well.

Continued from Front page

## PHS alum cont'd.

her trainer, Matthew Riley, to host a youth basketball camp. Riley is also the founder of the React non-profit organization.

Riley stated that he has been training others since he was sixteen, and that he loves teaching others basketball. He considers basketball to be his ministry and wants to teach others to love the sport as he does.

Beeman and others believe it is important to have programs like this one; to help remind people that no matter where you come from, you can still achieve your dreams.

Those in the community voiced appreciation for the Pelahatchie alum coming back and giving to the young athletes; and that having more teaching opportunities like this will help the local community and students improve in the future.



P.O. Box 771  
Pelahatchie, MS 39145  
Volume 13 Issue 8

**Publisher**  
Clay Mansell  
claymansell@pelahatchienews.com

**Sales**  
Judy Duke, (601) 706-9237 x2  
sales@pelahatchienews.com

**Social Media Manager**  
Susie A. Wolfe, (601) 566-1932 x2  
susieawolfe@gmail.com

**Writers**  
Kenneth McDade, Katie White

**Graphic Designer**  
Holly Embry  
designer@swrankinnews.com

**Office Manager**  
Doris Bynum, (601) 566-1932 x0

For submission information, email  
news@pelahatchienews.com.

Pelahatchie News is published on the first  
Tuesday of every month in Pelahatchie, MS.

Copyright 2023. All rights reserved. Materials may not be  
reproduced in whole or in part without written permission  
of the publisher.



Find us on  
**Facebook**

www.facebook.com/PelahatchieNews

Continued on page 5

# Pelahatchie High School, Principal Anderson welcomes new staff members.



By Guest Columnist, Voncille Anderson, Head Principal, Pelahatchie High School

With the start of the new school year just around the corner, Pelahatchie would like to welcome its newest staff members.

Special to Pelahatchie News

Welcome Addison Stewart to Pelahatchie High School (PHS). She's a University of Southern Mississippi graduate with a Bachelor of Science in Elementary Education, coming to PHS from Pearl, MS. Ms. Stewart already has a year of teaching under her belt and is eager to connect with her community. She's looking forward to exploring new subjects outside of elementary education this year. In her free time, she loves reading and working out with her puppy. Ms. Stewart can't go a day without coffee! Welcome to the PHS Tribe!



Meet Mrs. Jennifer Pope, a seasoned educator bringing over eleven years of teaching and coaching experience to Pelahatchie High School. With a B.S. in Elementary Education from Mississippi State University and an M.Ed. in Educational Leadership from Mississippi University for Women, Mrs. Pope is passionate about enhancing instructional strategies and integrating digital training to engage students effectively. For Mrs. Pope, education is a calling influenced by impactful mentors who shaped her academic journey. Beyond the classroom, she enjoys outdoor activities, family time with her husband Richard and their two children, reading, and cheering on Mississippi State at baseball and volleyball games. Mrs. Pope's commitment and enthusiasm promise a dynamic contribution to the school community in the upcoming 2024-2025 school year.



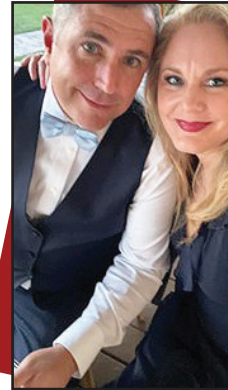
Welcome Mrs. Deanna Knowles, a dedicated educator with over 10 years of experience. Mrs. Knowles carries a Bachelor of Arts in English from The University of Southern Mississippi. Originally from Columbia, MS, Mrs. Knowles is excited to join Pelahatchie High School's staff as the instructional coach, where she aims to strengthen instructional strategies and incorporate her expertise in digital training to engage and enrich student learning. For Mrs. Knowles, education is more than a profession; it's a calling and a mission field where she finds fulfillment in positively impacting students and colleagues alike. Outside of school, Mrs. Knowles enjoys spending time with her husband Jeremy and their two daughters, Harper and Rayleigh. Her commitment to supporting and encouraging others makes her a valuable addition to the school community for the 2024-2025 school year and beyond.



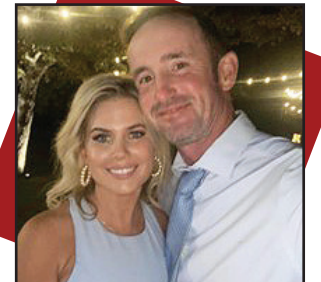
Introducing Anna Bigby, an experienced educator dedicated to fostering young minds. With a B.S. in Biological Sciences from the University of Tennessee and over 12 years of teaching experience, Mrs. Bigby brings a wealth of knowledge to her role. Originally from Martin, TN, she, along with her husband Evan and their two children, are excited to become part of Pelahatchie's welcoming community. Mrs. Bigby is passionate about making a meaningful impact on students' lives, driven by her aspiration to be the supportive teacher she once wished for herself. Her commitment to inspiring and empowering students extends beyond the classroom, shaping her approach for the upcoming school year and beyond.



Welcome Joelle Bunnell, a dedicated educator with 23 years of experience in teaching. Mrs. Bunnell holds a BA in English from the University of Southern Mississippi and hails from Lumberton, MS. She is joined by her husband Frank, who serves as the assistant principal at Yazoo County High School, and together they cherish their five children and two granddaughters. Mrs. Bunnell is eagerly anticipating the 2024-2025 school year, where she looks forward to inspiring her new students to excel in reading and writing. Her passion for education stems from her love for English literature and a desire to share the joy of reading and writing with others. Beyond the classroom, Mrs. Bunnell enjoys relaxing with a good book, especially when she's by the beach or poolside.



Welcome Lee Martin, an experienced educator with 21 years of dedication to teaching. Mr. Martin holds degrees in Biology from Mississippi College and Educational Leadership from the University of Southern Mississippi. Originally from Lake, MS, he is supported by his family, his wife Jeri and three children. Looking forward to the 2024-2025 school year, Mr. Lee is eager to take on new challenges in education. His passion for teaching stems from his desire to be a positive Christian role model for the next generation, reflecting his strong commitment to shaping the future of our nation.



Introducing Melissa Knippers, an experienced educator with a diverse background in education. Mrs. Knippers holds a B.A. from Blue Mountain College and an M.Div. CE from New Orleans Baptist Theological Seminary. Originally from Boonville, MS, she brings 16 years of public school teaching experience and 2 years in private education. Mrs. Knippers is supported by her husband of 23 years, Jason, and together they have three daughters. Looking ahead to the 2024-2025 school year, Mrs. Knippers is enthusiastic about fostering a love for math among her students and helping them develop strong mathematical skills. Her passion for education stems from her desire to inspire curiosity and a lifelong love for learning in her students.



Photos special to Pelahatchie News

Introducing Alisha Scarborough, an administrative intern with a robust educational background. Mrs. Scarborough holds a B.S. in Elementary Education with Secondary Endorsements from Delta State University and has pursued further studies in Educational Leadership and Administration at the University of Mississippi. Originally from Brandon, MS, she brings seven years of experience in education to Pelahatchie. Mrs. Scarborough is supported by her husband Zeb, and together they have two sons and a daughter. In the upcoming 2024-2025 school year, Mrs. Scarborough looks forward to immersing herself in the unique "Pelahatchie culture" and continuing to make a positive impact as she grows in her administrative role. Her dedication to education is driven by her belief in providing unwavering support to every student. Outside of her professional pursuits, Mrs. Scarborough enjoys outdoor activities and cheering on her children at their sporting events.



EZ WHEELS INC.

Kubota

For Earth. For Life.

Your authorized Kubota dealer!  
601-854-5112 601-854-5162



<https://www.facebook.com/PelahatchieNews/>  
Come see us on Facebook!

# Principal Sanders welcomes students back to school



By Guest Columnist,  
Robin Sanders, Principal,  
Pelahatchie Elementary School

Welcome back Pelahatchie Elementary! I hope you have all had a wonderful summer. As we prepare to embark on a new school year, I am filled with excitement and anticipation for all that lies ahead.

At Pelahatchie Elementary, our mission is to provide a safe and nurturing environment where every student can thrive academically, socially, and emotionally. We are committed to fostering a love for learning and preparing our students for future success.

**Updates and Improvements:** Over the summer, our dedicated staff has been hard at work preparing for the upcoming school year. We have made several improvements to our facilities, including our new secure entry. This provides an extra layer of security for our campus. The safety of our students is our top priority. We have comprehensive safety protocols in place, and our staff is trained to respond effectively to any situation that may arise. Please rest as-

sured that your child's safety is always our primary concern.

**Communication:** Effective communication between home and school is essential for your child's success. Throughout the year, we will keep you informed about school events, academic progress, and other important information via ParentSquare. This will replace the Remind App. Mass messages will go straight to emails and/or texts based on what information you enter during online registration. If you forgot to add someone when completing online registration, you can always call the office and we can add that information for you. You can also keep up to date with school information through our website, pes.rcsd.ms, and our FB page, Pelahatchie\_ES.

**Attendance:** This year's goal is to reduce the number of students who are chronically absent. Students who are chronically absent, meaning they miss at least 10% in a school year (18 or more days) for any reason, are at serious risk of falling behind in school. There are times when students will be absent, but we hope that we are able to reduce the percentage of students who are missing 18 or more days each year. Good atten-



dance leads to:

- Reading well by the end of 3rd grade
- Passing important courses
- Staying on track for graduation
- Earning college degrees
- Succeeding in the workplace

Students in PreK-6th grade are required to attend 63% of the school day. The early grades are just as important as the upper grades, since that's when reading foundational skills are taught. When examining 23-24 data, students who were chronically absent this year were not coming late or checking out early, they were absent the entire day. We hope that all of our families will work with us to improve attendance for this coming

year. Pelahatchie Elementary families - Let's Strive for Less Than Five absences this year.

**Parent Involvement:** We value the partnership between home and school and encourage your active involvement in your child's education. Whether you can volunteer in the classroom, be a part of our PTO, or support school events, your contributions are invaluable. Kaila McCrory is our PTO president. Her email is pelahatchieelpto@gmail.com. You can also follow their FB page, Pelahatchie Elementary PTO.

Please check out our Title 1 resources on our school website, pes.rcsd.ms. You are encouraged to provide feedback at any time by emailing robin.sanders@rcsd.ms.

I am truly honored to serve as the principal of Pelahatchie Elementary. We are committed to making this a successful and fulfilling year for every student. Please do not hesitate to reach out with any questions, concerns, or ideas you may have.

Thank you for entrusting us with your child's education. Let's work together to make this a memorable and rewarding school year! Go Chiefs!

## PELAHATCHIE NEWS NETWORK



## WRITERS NEEDED

### PELAHATCHIE AREA

- COMMUNITY FEATURE WRITER
- CITY BEAT REPORTER

If you enjoy writing, working with the public, and are interested in being a part of what is going on in our town and local community please contact Clay Mansell

[claymansell@pelahachienews.com](mailto:claymansell@pelahachienews.com)

## ERA Softball makes perfect game



Special to Pelahatchie News

Congrats to Callie Derrick & Holly Jackson for combining for a PERFECT GAME against Newton.



**MEMBERS HELPING MEMBERS**  
SOUTHERN PINE ELECTRIC



SCAN TO LEARN MORE OR OPT OUT

**HOW DOES IT WORK?**

Southern Pine bills are voluntarily rounded up to the next dollar each month, and your small contribution is combined with contributions from other members. Twice a year, applications will be accepted and vetted by the Pinebelt Foundation, reviewed by the Southern Pine Member Advisory Committee, and funds will be dispersed to the selected charitable organizations who serve our 11-county service area.

**WHO BENEFITS?**

We all do! The major funding categories to be considered for grant funding are:

- Community Services
- First Responders
- Education and Youth
- Environment

**HOW CAN I FIND OUT MORE OR OPT OUT?**

Scan the QR code or visit southernpine.coop/MHM to find out more about Members Helping Members or opt out the program.



**NOW TAKING APPLICATIONS**

**1 & 2 BEDROOMS  
PELAHATCHIE APARTMENTS**

713 College Street, Pelahatchie, MS 39145  
601-854-5814, TTY: 711

**OFFICE HOURS:**

Monday & Wednesday, 8:00a.m. – 5:00p.m.

*Appliances Furnished • Central Heat & Air  
Laundry Facilities • HUD Vouchers Accepted  
Accepts referrals from MS Olmstead Initiative Network  
and Community Mental Health Centers*

For more information or to place an application call the office number listed above or come by the office during office hours.



J&A Management  
Corinth, MS  
662-287-6158



"This institution is an equal opportunity provider and employee."

**Pelahatchie Library August Events**

*"A Time to Remember"*

THURSDAY

AUGUST 1, 5:30 P.M.

SHARE MEMORIES AND SUPPORT WITH OTHERS EXPERIENCING LOSS OF A LOVED ONE

*Senior Citizens' Social*

TUESDAY

AUGUST 13, 11:00 A.M.

TUESDAY

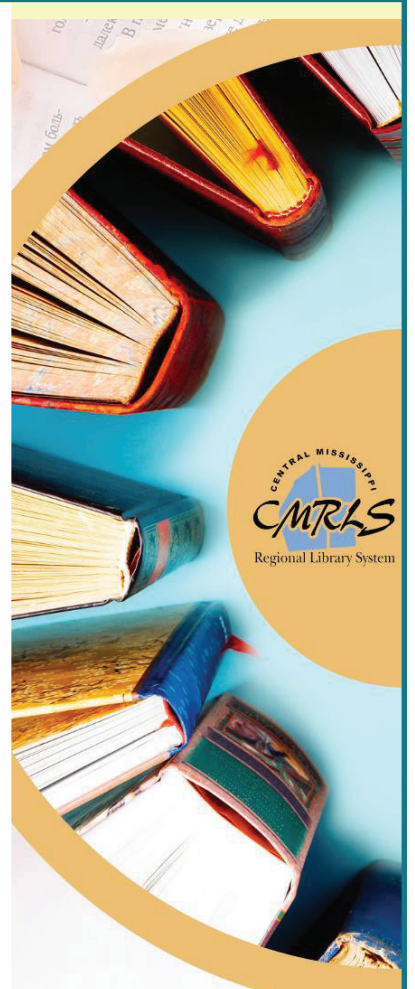
AUGUST 27, 11:00 A.M.

*Adult Book Club*

WEDNESDAY

AUGUST 21, 11:00 A.M.

DISCUSSING *DRIFTWOOD BAY*  
BY IRENE HANNON



Continued from Page 2

**Skin cancer screening, cont'd.**

"People should try to avoid overexposure. Outdoors, they should wear a hat and light-colored clothing and cover up." And use sunscreen, Helms said. "It should be applied about half an hour before exposure to the sun. There are chemical sunscreens that absorb the bad UV rays and release them from the body. The others are physical sun blockers with ingredients like zinc oxide or titanium dioxide.

"It's best to use a SPF [Sun Protection Factor] of 30 or greater."

People who come by Grants Ferry for a screening receive samples of sunscreen and instructions on protecting skin from sunlight, Puhr said. "We also ask them to avoid tanning beds."

UMMC offers skin cancer screenings and/or dermatologic services elsewhere, including those for underserved patients. Among them is the monthly Mississippi Delta Rolling Fork High School Dermatology Clinic for rural patients. The Jackson Free Clinic, 925 Martin Luther King Jr. Drive, Jackson, run by student volunteers, schedules free dermatologic services for patients once every three months.

Even if you've never had skin cancer, a yearly screening is prudent, Puhr said. For those who have been treated for skin cancer, the recommendation is a screening every three months afterward for the

first year. If no cancer is discovered, the checkups come less frequently, but at least once a year.

In the meantime, you should also check yourself, Helms said. "Look for bleeding lesions or pigmented lesions or moles that are growing or changing color." For guidance, use the ABCDE test when scrutinizing a mole, he said:

**Asymmetry** – If the shape isn't symmetrical, or uniform, this is a warning sign.

**Border** – Look for a mole with an irregular border – jagged, uneven, etc.

**Color** – If the mole has more than one color or shade, it may be cancerous.

**Diameter** – A span of more than a quarter of an inch – about the size of a pencil eraser – is another red flag.

**Evolution** – When a spot is changing in size, shape or color, or bleeds or becomes itchy or painful, it's time to see a dermatologist.

In fact, if any of these signs appear, Helms said, see a dermatologist soon.

To schedule an appointment with a dermatology provider at UMMC, call 601-815-3374 or go online at umc.edu/Healthcare/Make-An-Appointment/Make-Appointment.

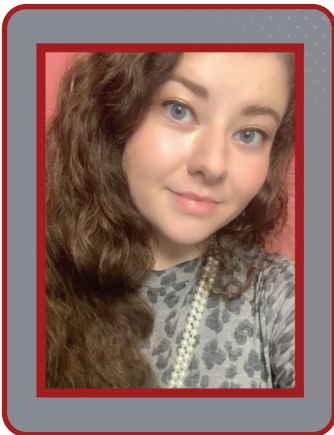


# Pelahatchie Elementary School welcomes new teachers

Kristen Hall joins our team as a 2nd grade teacher. Her dedication and passion for teaching will surely be a great addition to Pelahatchie Elementary School (PES) as everyone works to learn and grow during the 2024-2025 school year. Pelahatchie holds a special place in her heart. Hall is a former Assistant Teacher at Pelahatchie and is thrilled to return as a second-grade teacher! She graduated with a B.S. in Elementary Education from The University of Southern Mississippi in 2023.



Amanda Johnston joins our team as a 1st grade teacher this year. She is excited to be able to teach in the community where she lives. Johnston is excited to be a first-grade teacher at Pelahatchie Elementary School this year. She graduated with a bachelor's degree from Mississippi State University in 2022 and will be attending Delta State University to receive a master's degree this fall. Johnston has worked in an elementary classroom setting for 6 years in the Scott County School District.



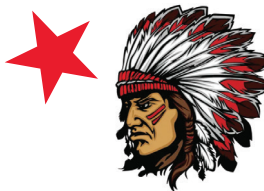
MaryLynn Crotwell joins our team as a Special Education teacher. Her experience and heart for teaching will surely be a great addition to PHS as the students learn and grow during the new school year. Crotwell comes to Pelahatchie Elementary School with over 20 years educational experience. From homeschooling teacher to kindergarten teacher to middle school lead teacher to elementary assistant principal and principal, she brings a wealth of knowledge in education, plus a huge heart to see all kiddos succeed. Mary Lynn and Tim have been married for 30 years and have 3 children. She enjoys reading, traveling, and spending time with family and friends.



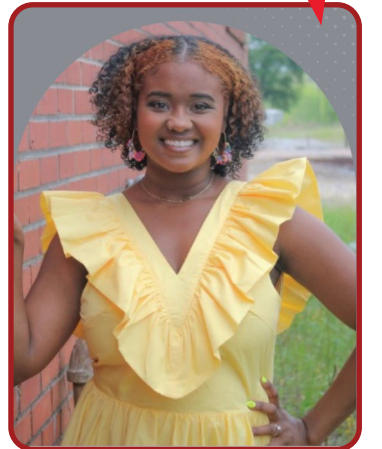
Bailey Cordell will be a 4th grade teacher this year. In this new role, she will help learners to grow as a lead teacher. Cordell started working at Pelahatchie Elementary last year as an ARI (Assistant Reading Instructor) in the first grade. She grew up in Pelahatchie and loves her hometown. Cordell graduated with a bachelor's degree from the University for Women in 2023 and is currently working on a master's degree from Jackson State University.



Lynn Hill will be a 5th grade math teacher this year. In this role, she will be on campus full time this year as a lead teacher. As a resident of Pelahatchie, Hill is excited to work with the community and people that she loves so much. We are delighted to have her continue to help our team in our work to empower our students to learn and grow during the 2024-2025 school year. Hill is a 38-year resident of Pelahatchie and loves her hometown and its people. She has a bachelor's degree in elementary education from the University of Southern Mississippi. Hill has been teaching in Rankin County for 37 years with experience in grades K-8. As a teacher, she is grateful to have the opportunity to teach, guide, and motivate my students each day. Hill joined the Pelahatchie Elementary family last year as a long-term substitute teacher.



Juleah (Boyd) Jones will be a 3rd grade teacher this year. She will also be a lead teacher this year. As a graduate from Pelahatchie High School, she has always had a deep commitment and love for the community. Jones is ready to start her first year of teaching here in her hometown of Pelahatchie. Jones has worked closely with several students in recent years as a First Grade ARI.



Photos special to Pelahatchie News



**PAW PATROL LIVE! HEROES UNITE**

**TICKETS ON SALE NOW!**  
**MISSISSIPPI COLISEUM**  
**SEPTEMBER 17 & 18**  
**PAWPATROL.LIVE.COM**

A VSTAR ENTERTAINMENT PRODUCTION  
 nickelodeon. SPIN

© 2024 Spin Master Ltd. PAW PATROL and all related titles, logos, characters, and SPIN MASTER logo are trademarks of Spin Master Ltd. Used under license. Nickelodeon and all related titles and logos are trademarks of Viacom International Inc.



**Crooked Creek Animal Hospital, Inc.**

Charles M. Edwards II, DVM  
 Staci L. Rhodes, DVM  
 Jenny Sowell, DVM  
 Katlyn Henning, DVM  
 Susan Thrash, DVM

123 Pleasant Pace Dr.  
 Pelahatchie, MS  
[www.crookedcreekanimal.com](http://www.crookedcreekanimal.com)  
 Phone: 601-854-7808  
 Fax: 601-854-7810

Crooked Creek Lodge  
 601-812-7012  
[ccahlodge@gmail.com](mailto:ccahlodge@gmail.com)

Follow us on:  
 Facebook: [www.facebook.com/CrookedCreekAH](http://www.facebook.com/CrookedCreekAH)  
 Instagram: [www.instagram.com/ccanimalhospital](http://www.instagram.com/ccanimalhospital)  
 Facebook: [www.facebook.com/CrookedCreekLodge](http://www.facebook.com/CrookedCreekLodge)



# Griffin Family Medical Clinic

WE OFFER THE 7TH GRADE REQUIRED IMMUNIZATION.  
FOR DETAILS, GIVE US A CALL.



Mary Ann Griffin, CFNP • Kim Risher • Keli Robertson  
507 Hwy 80 West, Pelahatchie, MS 39145  
601-854-8002

## Patriot's Mayette wins first at Mize



Special to Pelahatchie News

Audrey Mayette took first overall female and first overall in the Mize Mississippi 5k Watermelon Run with a time of 19:39.

## ERA's Baker places third at Classic



Special to Pelahatchie News

Jewel Baker was the third woman to finish at the 2024 Watermelon Classic with a time of 22:01. She beat USM commit and former Jackson Prep standout Olivia Smith by over 2 minutes.

# Fusion Martial Arts

503 2nd St., Pelahatchie, MS  
601-941-3937  
Michael Harvey - Owner/Instructor



## Now enrolling new students!

Classes held Mondays and Thursdays  
5:30-6:15 - Beginner/Shadow Moogi  
6:00-6:45 - Beginner/Intermediate  
6:45-7:30 - Adult/Advanced

## Wilson, Lady Lions win championship



Special to Pelahatchie News

Congratulations to Payton Wilson. Payton is an upcoming Sophomore at Pelahatchie High School (PHS) who has spent the month of July traveling with The Sisterhood Lady Lions basketball team. Payton has represented PHS well with a total of more than 96 pts, 82 rebounds, and 33 assists. Her team is bringing home the championship title from Kentucky.

## Grant, Mavericks win championship



Special to Pelahatchie News

Samarion Grant, a student at Pelahatchie High School, participated in the Smoke Tour Nationals hosted on the MS Gulf Coast. His team, the Mavericks Elite, brought home the championship.



**THE BRANCH**  
NEW ARRIVALS!! COME SEE US THIS WEEK!!  
CHECK OUT OUR APPAREL, GIFTS, SHOES, JEWELRY, BACKPACKS, AND MORE.  
WE HAVE SOMETHING FOR EVERYONE. GIRLS AND BOYS, MEN AND LADIES, GIFTS AND MORE.  
**BACK TO SCHOOL SPECIALS!!**

Rankin County Co.



# PHS teachers participate in flex block to prepare for new year

Pelahatchie High School teachers spent the first morning experiencing flex block concepts before implementing them with our students in the coming school year. Teachers selected creative activities to present to peers, then the teachers were given an opportunity to sign up for three classes to attend, and off to flex block we went. Courses offered were baking, beauty, book club, basics of line dancing, and board games.



**It's not just a generator.  
It's a power move.™**

Receive a free 5-year warranty with qualifying purchase\* - valued at \$535.

Call 601-460-0256 to schedule your free quote!

\*Terms and Conditions apply.





# The Muscadine Vine Hosts Back to School Market Extravaganza

By Kenneth McDade

On Saturday, August 3, 2024, The Muscadine Vine hosted its highly anticipated Back to School Market at 505 Second Avenue in the Davis Shopping Center parking lot. The day long fun-filled, family event was free for all in attendance and took place from 9am to 4pm. The event included lots of entertainment, shopping, and community spirit, making it a good way to kick off the new school year.

Founded by best friends Kristin Womack and Stephanie Martin, with support from Stephanie's husband Blake, The Muscadine Vine has become a staple in Pelahatchie since its grand opening on October 14, 2023. This charming gift shop, known for its vibrant colors, delightful aromas, and quirky employee of the month Vinny the



Special to Pelahatchie News

Fish, offers a unique collection of hand-made items and boutique creations.

The Back to School Market featured live music, a bounce house and slides for the kids, and a variety of food vendors, boutiques, and arts and crafts vendors.

Visitors were also able to participate in giveaways, which included the chance to win a back-to-school backpack. Partial proceeds from in-store sales will be donated to the Pelahatchie Attendance Center for lunch funds, further highlighting

The Muscadine Vine's commitment to supporting the local community.

Kristin and Stephanie, both Pelahatchie natives, take pride in their roots and eagerly seek customer feedback to continually enhance their offerings. The Muscadine Vine features an array of products, including candles, gift wrapping, gift cards, wood-work designs, embroidery, and stylish apparel. Beyond being a retail space, it serves as a community hub, hosting workshops led by guest artists where visitors can create their crafts with expert guidance. They also host a ladies group for Bunko nights.

The store is open Tuesday to Friday from 10:00 AM to 6:00 PM and Saturdays from 10:00 AM to 3:00 PM, and is closed on Sundays and Mondays.

Stay connected with The Muscadine Vine on Facebook for updates and more information on any future events.

## BUSINESS SPOTLIGHT DIRECTORY

### Edward Jones

Member SIPC

How does your portfolio measure up?  
Let's review your strategy.



**Jackson Pullen, AAMS™**  
Financial Advisor  
101 High Pointe Ct Suite A  
Brandon, MS 39042  
601-952-4154

MKT-58940-A AECSPAD

> [edwardjones.com](http://edwardjones.com)

### LAMPTON-LOVE GAS CO.

PEOPLE TRUST OUR PRODUCT AND SERVICE



WE ARE A GAS MAN COMPANY

RESIDENTIAL - FARM - INDUSTRIAL  
SALES & SERVICES  
GAS - SYSTEMS - CARBURETION

**DANIEL ROBINSON**  
MANAGER

PELAHATCHIE, MS  
601-854-5256

### Specialty Tree Service LLC

601-405-5857

Specializing in large and dangerous tree removal

**Free Estimates!**

Gabe Walters  
601-405-5857

Tree Removal • Tree Trimming  
Stump Grinding • Lot Clearing  
Debris Removal



### TOMMY MILES AGENCY PRINCIPAL



**TRI-COUNTY INSURANCE AGENCY**  
89 HWY 481 SOUTH  
MORTON, MS 39117

Phone: (601) 732-6769  
Fax: (601) 732-8777  
Email: [insurant@bellsouth.net](mailto:insurant@bellsouth.net)



### KIMBERLY BANKS, PLLC

physical address mailing address  
407 FONTAINE PLACE P.O. BOX 12303  
SUITE 101 JACKSON, MS 39236-2303  
RIDGELAND, MS 39157

P. 601-300-8101 F. 1-855-708-0677  
E. [KBANKS@KIMBERLYBANKSPLLC.COM](mailto:KBANKS@KIMBERLYBANKSPLLC.COM)  
[kbanks@kimberlybankspllc.com](mailto:kbanks@kimberlybankspllc.com)



136 Front Street  
Lake, MS 39092  
601-775-3400

3054 Highway 80 W.  
Morton, MS 39117  
601-732-3624

### WOLF FUNERAL SERVICES, INC.

"Familiar faces providing personal service in your time of need."

[www.wolffuneralservices.com](http://www.wolffuneralservices.com)

### RICHLAND WRECKER SERVICE & AUTO REPAIR

We Go The Extra Mile • 24 Hour Service  
22 Years Experience in Auto Repair

Brakes • Timing Belts • Water Pumps • Clutches • Certified A/C and More

Bus. 601-936-0003  
Fax 601-936-0353

**24 HOUR**  
**601-502-3706**

2651 Hwy. 468  
Pearl, MS 39208

**WE BUY JUNK CARS**



INTERNET | VOICE

Master Card American Express Discover VISA



### Crossgates Jewelers, Inc.

**Tammy & Gerald Frazier**  
Owners

(601) 939-9313  
Watch & Jewelry Repair  
Custom Design

401 Cross Park Drive  
Suite A  
Pearl, MS 39208

NOW TAKING APPLICATIONS!!

## Golden Age APARTMENTS

Managed by CMS Management, LLC

Olmstead Initiative

### Pelahatchie, MS RENTAL ASSISTANCE

### 1 & 2 Bedroom Apartments

62 years or older or handicap regardless of age

*"This institution is an equal opportunity provider."*

# 601-852-2400

EQUAL HOUSING  
OPPORTUNITY

## PELAHATCHIE NEWS NETWORK



## PAST HEADLINES

### 2014 - 10 years ago

- "ICBA and PriorityOne Bank provide tips for first-time home-buyers"
- "Local entrepreneur represents town at National Mary Kay Inc. Seminar"

### 2019 - 5 years ago

- "Civil War Relic Show raises money for Wounded Warriors"
- "ERA celebrates 50 years of education"

### 2023 - Last Year

- "Pelahatchie HS baseball team hosts alumni"
- "Southern Pine Electric employee Jan Collins writes children's book"

## Members Helping Members: Small Change to Make a Big Difference

Special to Pelahatchie News

On October 1st, Southern Pine Electric will launch a new voluntary program, Members Helping Members. Under this program, Southern Pine's members' bills will automatically be rounded up to the nearest dollar and used to support our communities through community grants. Members Helping Members is a simple, voluntary way to make a big difference, and the money will go towards helping the people Southern Pine serves.

contribution, no matter how small, is part of a powerful collective effort.

"We hear from our members that they want us to help in their communities to promote service programs that benefit their families and others. We can all do that through Members Helping Members in a painless way. The average monthly contribution is less than the price of a canned drink. We can make an enormous difference if we join together in a cooperative spirit. This program allows us



For example, a bill of \$82.75 would be rounded up to \$83. The extra .25 cents is placed in the Members Helping Members Trust Fund administered by the Pinebelt Foundation, a charitable organization described in Sections 501(c)(3) and 509(a)(1) of the Internal Revenue Code. As a charitable support service provider, the Pinebelt Foundation has been helping charities for over 25 years. Southern Pine's board of directors, management, or employees will not decide on the awarding of funds and are not eligible to receive grants from Members Helping Members.

Members Helping Members provides financial support for charitable causes and non-profit organizations within the 11 counties Southern Pine serves. Your spare change can fund philanthropic projects, equip emergency services, upgrade classrooms and playgrounds, and more. The average amount a participating member contributes is about \$6 a year.

If the program isn't right for you, opting out is straightforward. You can do so by visiting Southern Pine.coop/MHM or just giving us a call. Before you decide, consider the program's collective impact. Six dollars a year may not seem like much, but when combined with all the other participating members of Southern Pine, it can make a significant difference in our communities. Your

all to help each other, and I am happy to be a part of it," said Jan Collins, Vice President of Communications at Southern Pine Electric.

Electric co-ops serve by following seven Cooperative Principles. Cooperative principle #7, Concern for Community, guides Southern Pine Electric in everything we do. Members Helping Members allows all of us to come together to fulfill that principle. Together, we can make a significant impact and bring the power of giving.

For more information or to opt out, visit [southernpine.coop/MHM](http://southernpine.coop/MHM).

*Southern Pine Electric is a member-owned, not-for-profit cooperative that distributes electricity to more than 70,000 members in 11 central and south Mississippi counties. Headquartered in Taylorsville, Southern Pine has offices in Brandon, Newton, Hattiesburg, and New Hebron.*



# Pelahatchie High School 2024 Band Camp Week in Photos

The Pelahatchie High School Band recently began preparing for the new year with a five-day band camp. Each day had a theme including Beach, Section Colors, Tacky Tourist, Camo, and Chiefs Day. Everyone put in a lot of hard work and had some fun too.


Day four (Camo) was eventful with Mr. Tyler Findley with AMRO Music assisting with fundamentals, followed by the Herrington family bringing the band popsicles. Later, the Williamson family brought by a fresh watermelon

for everyone, and the Boyer family brought small water bottles and Cheez-Its. To end the day, Mayor Van Horn brought a city fire truck and surprised the band with a cooldown.

On Day five (Chiefs), the band held its second annual Drill Down competition, where students have to respond to a series of marching commands without messing up. This year's rookie winner was Maren McCartney, and the overall winner was Branch Boyer.




Photos special to Pelahatchie News

 **Methodist Senior Services**  
*Celebration. Innovation. Hope.*

**Riggs Manor**  
Retirement Community





**62 and BOLDER?**



**Our campus offers senior living with your choice of**


- Apartments & Garden Homes for Independent Lifestyles
- Assisted Living Studios & Apartments
- Memory Support Living in Green House® Homes

**Call today for your personal tour!**  
**(601) 857-5011**

2300 Seven Springs Road • Raymond, MS 39154

**Cross Roads Baptist Church**



**Sunday Schedule:**  
9:00 a.m. - Worship Service  
10:30 a.m. - Sunday School for all ages

**Wednesday Schedule:**  
5:30 p.m. - Family Dinner (Call to make reservations)  
6:30 p.m. - Prayer Meeting; Youth Worship;  
Children's Activities; Ladies Bible Study

**Online Worship Opportunity:**  
(Cross Roads Baptist Church Facebook Page)  
9:00 a.m. - Worship Service every Sunday

Cross Roads Baptist Church, 104 Crossroads Road, Pelahatchie, MS 39145  
(601) 546-2297 • [www.crbc.online](http://www.crbc.online)  
(5 miles south of Interstate 20 on Highway 43 South)

## The prevention, management, and treatment of Fall Army Worms



By Doug Carter, Rankin County Extension Agent

Special to Pelahatchie News

Fall armyworms are the most damaging insect pests of Mississippi hayfields and pastures. These caterpillars can destroy a field of bermudagrass in just a few

days. Fall armyworms are unpredictable pests. Some years high populations do not occur until fall, and the most heavily infested fields require only two sprays. Other years, like seems to be the case this year, damaging infestations appear as early as June, and some fields require 6 or more treatments.

Armyworms cannot survive the winter here in Mississippi. Populations rebuild every year from moths that fly in from locations farther south. Places like South America, the Caribbean Islands, and Southern Florida. Some years, the moths arrive earlier than others or find better growing conditions once they arrive here. This is also why infestations usually occur earlier in the southern part of the state, and populations are highest in late summer and fall. After they arrive in the south, it usually takes them a few generations to build damaging numbers.

Fall armyworm caterpillars vary in color depending on their stage of development and diet. Most are green or tan, some can be dark brown or almost black, especially later in the year. The body has dark spots. Most notably, there are four spots at the rear of the body that form a square, and a distinct white inverted Y shape on the head. Mature caterpillars are about 1 ½ inch long.

Fall armyworm caterpillars take about 14 days to complete their larval development, it takes about 1 month to complete a generation. Development rate can vary depending on temperature and other factors. As with other caterpillars, about 80 percent of total leaf consumption occurs in the last 2-3 days of the caterpillar stage. Therefore, fall armyworm damage can occur very quickly. Grass that looked fine on Friday morning can be nothing but stems by Monday afternoon.

Newly hatched caterpillars are too small to feed all the way through a leaf blade. So, they begin by feeding on the underside of a leaf, but they leave the clear upper epidermis intact. This creates tiny “windowpanes” in the grass blades that appear silver or white. When large numbers of larva are just beginning to feed in the field, the grass often has the frosted appearance be-



Special to Pelahatchie News

cause of thousands of “windowpanes”.

Producers also watch for egrets and other birds feeding in a hayfield as an indicator of fall army worm problems. If you see lots of birds in your hayfield, you may want to check to see what they are feeding on.

Producers also become concerned about fall army worms if they see large numbers of moths flying in the headlights, as they drive across a hayfield after dark. Seeing large numbers of moths in headlights after dark, is a good rea-

son to check for armyworms. Learning the early signs of armyworms, can help save a cutting of hay.

The best way to avoid losing a cutting of hay to fall army worms is to visit fields every 3 or 4 days and check for fall armyworms. It is best to get out of the truck and get on our hands and knees and look closely. Count the larvae that fall to the ground in a 1-square foot area. Do this at several locations in each field. Treatment is recommended when the count exceeds three caterpillars that are one-fourth inch or longer per square foot.

Fall army worms are primarily pests of grasses, including ag crops such as corn, sorghum, rice, and millet. They especially like bermudagrass. It does not matter to them if the bermudagrass is in a yard, golf course, or is grown for hay. They also like some wide-leafed weedy grasses, such as barnyard grass, and broadleaf signal grass.

Fall army worms will attack early planted winter grazing crops, such as wheat and ryegrass, and can destroy stands as these crops are emerging.

Over the past few years there have been improvements in treatment options for fall armyworms. Traditional products include Seven and malathi-

Continued on page 14



**PriorityOne**  
MEMBER FDIC

Everyone needs a  
**COMPANION**

A simple savings account  
that delivers a CD yield.

CONTACT US TO LEARN MORE  
[www.priorityonebank.com](http://www.priorityonebank.com)



# Pastor's Perspective: Reading the Word and Reacting in Obedience



By Guest Columnist  
Spencer Sullivan, Pastor,  
Pelahatchie Baptist

Special to  
Pelahatchie News

Well, that was fast! While the summer temperatures and afternoon showers continue, the summer holidays for our teachers and students are sadly over. School is back in session (or will be in a few days for ERA). While there may be disappointment for some as that reality sets in, school starting a new year also means something else is just around the corner...Football Season! In just a couple of weeks we'll be cheering on our Chiefs and Patriots! By the end of the month, we'll be cheering on our favorite college teams and just after that, our favorite NFL teams! Many people look forward to this season year-round. As I think about our teams currently enduring long practices and training camps, they are putting in the work now to prepare for their upcoming seasons. They train hard and put it in countless practice reps now in order to be ready when the lights come on and the whistle blows in just a few weeks. The best prepared teams and athletes

are the ones that can confidently and accurately read the opposing team's movements and plays and then appropriately react and execute their responsibilities. Read and react is a phrase that coaches will often yell out to remind their players what they've practiced and prepared for.

In recent weeks, I have been personally challenged in a similar way in my walk with Jesus. As I've read my Bible, I have noticed examples of God's people reading His Word or hearing His Word and then that producing a response from His people. The most recent example I've read was in Nehemiah. After rebuilding the wall in Jerusalem, the people gathered as one to hear Ezra, the priest, read the Law of God. The people had just returned to Judea from 70 years of captivity. Because of those years in a foreign land, for many, this was the first time they had ever heard the words of God's Law. Their response was twofold. There was sorrow and repentance over their sins and the sins of their people.



Special to Pelahatchie News

is and what He expects from us. It is through His Word that we come to know He has done everything necessary for us as sinners to be brought into a right relationship with Him through His Son Jesus. Therefore, when we read the Word of God or hear the Word of God, there should always be a response or reaction. It may be repentance (turning from sin) and faith. It may be awe and worship for who He is. It may be obedience as He calls us to live for Him. But as we read, there is always a coinciding right response/reaction.

And then there was a response of sincere and genuine worship. These responses were the right and appropriate responses. They read and reacted rightly. This has been a great reminder to me that we don't just read the Word of God for the sake of reading it or to tick off a box on our Christian to do list. We don't just read the Word of God for the sake of more knowledge, although learning more about God and His ways is always highly valuable. We read and listen to His Word because it is His Word to us. It is our way of understanding who He

How are you taking in God's Word? Do you read it regularly? Do you listen through an app on your phone? Has it honestly been a while? The Bible has the power to transform your life. It is the very Word of God! (2 Timothy 3:16) If you don't know where to start, read the Gospel of John. Start with a chapter a day. If you need help finding a reading plan, reach out and I'll be happy to help you. But read the Word of God with expectations. Listen for His voice. And as your favorite quarterback reads the defense this Fall, react rightly to what He says!

**WE SAVED YOU A SEAT**

**HINDS**  
COMMUNITY COLLEGE

**1-800-HINDSCC**  
**hindscc.edu**

JACKSON | NAHC | RANKIN | RAYMOND | UTICA | VICKSBURG

In compliance with Title VI of the Civil Rights Act of 1964, Title IX, Education Amendments of 1972 of the Higher Education Act, Section 504 of the Rehabilitation Act of 1973, the Americans with Disabilities Act of 1990 and other applicable Federal and State Acts, Hinds Community College offers equal education and employment opportunities and does not discriminate on the basis of race, color, national origin, religion, sex, age, disability or veteran status in its educational programs and activities. We recognize our responsibility to provide an open and welcoming environment that fosters a culture of diversity, equity, and inclusion for employees and students to collaboratively learn, work and serve our communities. The following have been designated to handle inquiries regarding these policies:

EEOC Compliance: Office of Campus Culture and Diversity, PO Box 1100 Raymond MS 39154; Phone: 601-857-3569 or Email: EEOC@hindscc.edu  
Title IX: Associate Vice President Student Services, Title IX Coordinator Box 1100 Raymond MS 39154; Phone: 601-857-3353 or Email: TitleIX@hindscc.edu.

Continued from Page 12

## Fall Army Worms

on, which are still available. There are many new products that are cheaper, more effective, provide longer residual control, and/or have more favorable pre-harvest intervals. These include several pyrethroid insecticides (zeta-cypermethrin-Mustang Max, cyfluthrin-Baythroid, and gamma-cyhalothrin-Declare) and two growth regulators (methoxyfenozide-Intrepid, and diflubenzuron-Dimilin), as well as several more caterpillar specific products (chlorantraniliprole-Vantacor, and spinosad-Blackhawk).

The pyrethroid insecticides are all restricted use products, which means you must have a current pesticide applicator certification card to be able to buy and use these products. It will probably be worth your time and effort to get this certification because pyrethroids are an effective, low-cost fall armyworm treatment. The growth regulator diflubenzuron is also a restricted use insecticide.

The preharvest interval for each insecticide can vary depending on whether the grass will be grazed or cut for hay. Also, "days to harvest" means days to cutting, not baling.

## Pelahatchie Gears Up for the Muscadine Jubilee

By Kenneth McDade

The excitement is building in Pelahatchie as the town prepares for its much-anticipated annual Muscadine Jubilee, set to take place on September 14, 2024, beginning at 10:00 AM. This beloved event promises a day filled with music, food, crafts, and family-friendly fun.

The festivities will kick off with a stirring rendition of the National Anthem and a ceremonial posting of the flag by the Pelahatchie JROTC, setting a patriotic tone for the day. Following this, attendees will be treated to a morning performance by Light of Mine, a talented mother-and-daughters singing group known for their captivating harmonies and heartfelt songs.

As the day progresses, the musical entertainment will continue to delight festival-goers. The Miles Flatt band will take the stage as the opening act for the renowned country music group Exile, whose performance is sure to be a highlight of the Jubilee.



local favorite.

For those seeking thrills, carnival rides will be available throughout the day, providing fun for all ages. From classic rides to more daring attractions, there will be plenty of options to keep everyone entertained.

The Muscadine Jubilee is a celebration of Pelahatchie's rich heritage and community spirit. It's an event where neighbors come together to enjoy good music, delicious food, and each other's company. Mark your calendars for September 14 and join us in downtown Pelahatchie for a day of unforgettable fun and festivities. Whether you're a longtime resident or a first-time visitor, the Muscadine Jubilee is an event you won't want to miss.



**MULTICRAFT**  
INTERNATIONAL  
INNOVATION MULTIPLIED

4341 Hwy 80 Pelahatchie, MS 39145

**COME JOIN THE MULTICRAFT TEAM**  
GREAT BENEFITS AND 10 PAID HOLIDAYS

**POSITIONS AVAILABLE**

Plant Assemblers  
Day and Night Shifts Available

Visit website for full job descriptions & application  
[www.Multicraft.com/Careers](http://www.Multicraft.com/Careers)

Apply on-line or walk-ins Welcome  
Resumes may be faxed to 601-854-1258  
Or emailed to [Patrice.bailey@multicraft.com](mailto:Patrice.bailey@multicraft.com)  
EOE Employer

**COME AND SEE US!**

**FOR ALL YOUR FARM, YARD, AND GARDEN NEEDS.**

**Back to School!**

**RANKIN COUNTY CO-OP**

2861 Hwy. 80 E.,  
Brandon, MS 39042  
601-825-5051

Check out our website at [thebranchrcc.com](http://thebranchrcc.com).

## PELAHATCHIE COMMUNITY SHOWS SUPPORT FOR PELAHATCHIE HIGH SCHOOL

Recently, a post was made on the Let's Talk Pelahatchie, MS! Facebook page inquiring about Pelahatchie High School.

Here are just a few of the responses. Go Chiefs!

**Abigail D** - I went there from 5th grade-senior year after switching from a private school and enjoyed it. Some of the best teachers and staff. You're going to have issues with any school. No school is perfect, but I feel like compared to other RCSD public schools, Pelahatchie is a good option.

**Vicki SP** - My grandchildren go there, and they are 1st and 7th graders this year. They are 4th generation Pelahatchie School kids. The principal at the elementary school is also a Pelahatchie graduate. We have had issues over the years but nothing that hasn't been easily fixed. Also my Daughter in Law and Niece are both teachers' aids at the Elementary and both are in college to be teachers. And they are also both graduates of the school. I couldn't think of a better school to trust my grandchildren to. I don't think you will be disappointed.

**Samantha J** - We moved here last year from Pearl, and it was one of the best decisions we have ever made. My kids love the school, the teachers and their new friends.

**Amy CC** - Teachers and special instructors were great with my children throughout elementary thru High school! They were given special help when needed!

**Ryshonda B** - The Principals, Asst. Principals, Office Admin., All the teachers, cafeteria employees and Janitor employees are amazing. They go above and beyond for the kids and they all work together. I love the update via text messages from the principals especially when there are things going on. They're very engaging.

**Christy T** - All 4 of my children have gone there; 2 have graduated and my baby who is now in 9th grade has been in Pelahatchie since prek4 and I will tell you there is no better school than Pelahatchie. Yes, you have good days and bad days and good teachers and bad ones, but I promise you they will love your children from the door.

**Joy M** - Many people move to Pelahatchie for the schools, the schools and staff are great! I have a child who excels academically, and a child with autism and ADHD who struggles, but both of their needs were met at PES and now PHS. My oldest son graduated from Pelahatchie with Highest Honors ACT scores that earned him several great scholarship offers.

**Misty D** - My daughter is a senior this year and I have a son going into 9th grade. We love Pelahatchie High School. Both of my children we diagnosed with learning disabilities (dyslexia and ADD) with the help of the elementary teachers. My daughter was very fond of the librarian too. We have never had any issues with the school.

**Christie C** - We came from private schools when we moved here. This is the best school any of my children ever attended! My last child was the only one who attended this school much to my regret. I wish I had moved to PELAHATCHIE sooner. Not to say the other children didn't get an education but the one at Pelahatchie was definitely better! They offer so much that the private schools do not offer! My youngest came out of high school prepared! I have grandchildren attending school there now. I wish the other grandchildren were in this district!

**Jessica K** - Pelahatchie schools are the one reason that's keeping us in Pelahatchie! The staff is so beyond amazing, and they care so much about their students. My son is going to 2nd grade, and I still hold his Kindergarten teacher very close to my heart!! He's diagnosed ADHD and wears hearing aids and they do EVERYTHING in their power to make sure he isn't going to struggle. The office staff is one of a kind and so supportive. The school is 100% fueled by the hearts of all the staff. I couldn't be more grateful.

**Shelia S** - Well I'm very positive as a retired teacher from PES that you won't find a better team of administrators in elementary or high school. Teachers there are like family and treat their students as their own. Great school. I can Say that because I've even gone back part time.

**TaKeidra L** - I have 2 daughters, 1 entering 10th and the other entering 4th. The 10th grader moved here with me when she started 7th grade coming from Ridgeland school district. Her 1st year was tough (like probably most newcomers to new school/new friends. (nothing to do with teachers and curriculum) but since the 1st year, she has excelled in pretty much everything she is in now (including having friends and being head on the cheer squad this year!) she is in JROTC and she absolutely love the school, teachers, etc! I love it too! I haven't had any major issues (thankfully). The elementary teachers are wonderful too! It's a smaller school compared to Ridgeland of course but everyone pretty much knows each other and it makes it easier for the teachers to have a better interaction I believe. Pelahatchie on the whole is great! No issues since moving here in 2020!

**Darrell M** - This is our 3rd year for 3 kids and 1st year for our baby twins. The teachers, parents, and students have all made us feel welcome, and my kids are actually learning! We came from Brandon where my kids seemed to get lost in the shuffle a lot. No regrets!



ERA Varsity Football schedule 2024

PHS Varsity Football schedule 2024

**EAST RANKIN ACADEMY**

2024 Varsity Football Schedule

AUG 1	Clinton Christian (Scrimmage)	Home	5:00 pm
AUG 16	at Pillow Academy	Greenwood, MS	7:00 pm
AUG 23	Oak Forest Academy	HOME	7:00 pm
AUG 30	at Winston Academy	Louisville, MS	7:00 pm
SEP 6	St. Aloysius	HOME	7:00 pm
SEP 13	* at Simpson Academy	Mendenhall, MS	7:00 pm
SEP 20	* Copiah Academy	HOME	7:00 pm
SEP 27	at Amite School Center	Liberty, MS	7:00 pm
OCT 4	at MRA	Madison, MS	7:00 pm
OCT 11	* at Leake Academy	Madden, MS	7:00 pm
OCT 18	Oak Hill Academy (Senior Night)	HOME	7:00 pm
OCT 25	* Lamar School (Homecoming)	HOME	7:00 pm
NOV 1	MAIS 5A Playoffs - Round 1	TBA	7:00 pm
NOV 1	MAIS 5A Playoffs - Round 2	TBA	7:00 pm
NOV 1	MAIS 5A Semifinals	TBA	7:00 pm
NOV 1	MAIS 5A State Championship	TBA	7:00 pm

**PATRIOTS** 

**VARSITY FOOTBALL SCHEDULE**

AUG. 23 @ MCLAURIN(SCRIMMAGE)  
 AUG. 30 VS NORTHEAST LAUDERDALE  
 SEPT. 6 VS STRINGER  
 SEPT. 13 VS LAKE  
 SEPT. 20 @ RICHLAND  
 SEPT. 27 @ MORTON  
**OCT. 4 @ ST. ANDREWS**  
 OCT. 11 VS LEAKE COUNTY  
**OCT. 18 VS PISGAH (HOMECOMING)**  
**OCT. 25 @ PUCKETT**  
**OCT. 31 VS RALEIGH (SR. NIGHT)**



PELAHATCHIE CHIEFS FOOTBALL 2024

**SUBSCRIBE**



Full year subscription  
for only \$12

Do you enjoy *Pelahatchie News*? Then have it delivered! We are pleased to announce that *Pelahatchie News* is offering subscriptions for \$12 per year.

Fill out and mail the form below or visit pelahatchienews.com and pay with PayPal account or with any Major Credit Card to begin getting a copy delivered right to your door.

Subscriber's Name \_\_\_\_\_  
 Address \_\_\_\_\_  
 City \_\_\_\_\_ State \_\_\_\_\_ Zip \_\_\_\_\_  
 Email \_\_\_\_\_ Phone (\_\_\_\_\_) \_\_\_\_\_

Make checks payable to: Mansell Media

Visit:  
pelahatchienews.com  
for more payment options.

Mail form to:  
Pelahatchie News  
P.O. Box 771  
Pelahatchie, MS 39145

Yogi bear™, Cindy bear™, and Boo Boo™ would like to welcome you to Jellystone Park™ in Pelahatchie, MS.

Jellystone Park

**AUGUST**  
THEMED WEEKENDS

**JURASSIC** WEEKEND  
JULY 29 - AUG 4

**MYSTERY** WEEKEND  
AUG 5-11

**WILD WEST** WEEKEND  
AUG 16-18

**Outer Space** WEEKEND  
AUG 23-25

**LABOR DAY** WEEKEND  
AUG 30 - SEP 2

back to school

back to school